

# PrintMaster® 2022

---

## User Guide

## Table of Contents

<b>Copyright Information .....</b>	<b>8</b>
<b>Legal Copy.....</b>	<b>9</b>
<b>1. PrintMaster 2020 USER GUIDE .....</b>	<b>10</b>
<b>2. What's New in PrintMaster 2020? .....</b>	<b>10</b>
<b>3. Key Features in PrintMaster 2020? .....</b>	<b>10</b>
<b>4. Video Tutorials .....</b>	<b>11</b>
<b>5. Usage of this Guide .....</b>	<b>11</b>
<b>6. Overview of New Features .....</b>	<b>12</b>
<b>6.1. Enhanced User Interface.....</b>	<b>12</b>
Fig 6.1: Enhanced User Interface.....	12
<b>6.2. Share Project by Gmail .....</b>	<b>12</b>
Fig 6.2- Share Project by Gmail .....	12
<b>6.3. Create Custom Borders.....</b>	<b>13</b>
Fig 6.3: Create Custom Borders.....	13
<b>6.4. Line Arrowhead .....</b>	<b>13</b>
Fig 6. 4: Line Arrowhead .....	13
<b>6.5. Line Patterns.....</b>	<b>14</b>
Fig 6.5: Line Patterns .....	14
<b>6.6. Change Shape Outline .....</b>	<b>14</b>
Fig 6.6: Change Shape Outline.....	14
<b>6.7. Add Customize Text into Shape .....</b>	<b>15</b>
Fig 6.7: Add Customize Text into Shape.....	15
<b>6.8. New Autosave Functionality.....</b>	<b>15</b>
Fig 6.8: New Autosave Functionality .....	15
<b>6.9. Improved Printing Wizard.....</b>	<b>16</b>
Fig 6.9: Improved Printing Wizard .....	16
<b>6.10. Customized Print Options .....</b>	<b>16</b>
Fig 6.10: Customized Print Options .....	16
<b>7. INSTALLATION AND RECOMMENDATIONS.....</b>	<b>17</b>
<b>7.1. System Requirements.....</b>	<b>17</b>
<b>7.2. System Settings .....</b>	<b>17</b>
<b>8. Installing PrintMaster 2020 .....</b>	<b>18</b>

8.1.	Installing PrintMaster 2020 from disc.....	18
8.2.	Installing PrintMaster 2020 from the download.....	18
8.3.	Important Project Information .....	19
8.4.	Avery® Template Support.....	19
9.	INTERFACE REFERENCE.....	20
	Fig 9: Interface Reference .....	20
9.1.	Page Canvas.....	20
	Fig 9.1: Right-Click Options .....	21
9.2.	Page Thumbnails .....	23
	Fig 9.2: Page Thumbnails .....	23
9.3.	Resource Gallery.....	23
	Fig 9.3.: Resource Gallery.....	24
9.4.	Menus .....	25
	Fig 9.4: Menus .....	25
9.5.	Colors .....	29
	Fig 9.5.1.....	29
	Fig 9.5.2: Combos .....	29
	Fig 9.5.4: HSV .....	30
	Fig 9.5.5: HSL .....	30
	Fig 9.5.6: RGB .....	31
	Fig 9.5.7: CMYK.....	31
	Fig 9.5.8: Favorites.....	32
	Fig 9.5.9: Gradient .....	32
9.6.	Toolbar .....	33
	Fig 9.6: Toolbar.....	33
	9.6.1. Icon Descriptions .....	33
9.7.	Design Tools .....	35
	Fig 9.7: Design Tools .....	35
10.	USING PrintMaster 2020 .....	36
10.1.	Starting a Project .....	36
	Fig 10.1: Starting a Project .....	36
10.2.	Create from Template.....	36
	Fig 10.2: Create from Template.....	37

<b>10.3. Design Your Own .....</b>	<b>37</b>
Fig 10.3: Design Your Own .....	38
<b>10.4. Saving Projects.....</b>	<b>38</b>
Fig 10.4 (a): Saving Projects .....	38
Fig 10.4 (b): Saving Projects .....	39
<b>10.5. Opening a Project .....</b>	<b>39</b>
Fig 10.5 (a): Opening a Project .....	39
Fig 10.5 (b): Opening a Project .....	40
<b>10.6. Project Pages .....</b>	<b>40</b>
Fig 10.6.1.: Adding a Page .....	40
Fig 10.6.4: Rearrange Pages .....	41
Fig 10.6.5: Importing Pages.....	41
<b>10.7. Photo Layouts .....</b>	<b>42</b>
Fig 10.7: Photo Layouts .....	42
<b>10.8. Working with Page Objects.....</b>	<b>42</b>
Fig 10.8.1.: Selecting Objects .....	43
Fig 10.18.4: Page Guides .....	44
Fig 10.8.5: Align Menu .....	45
Fig 10.8.7: Ungroup Objects.....	45
Fig 10.8.8: Cut, Copy and Paste .....	46
Fig 10.8.9: Deleting Objects .....	47
Fig 10.8.10: Layers .....	48
Fig 10.8.11: Layers Gallery .....	48
<b>10.9. Backgrounds .....</b>	<b>49</b>
Fig 10.9: Backgrounds .....	49
Fig 10.9.1: Adding Backgrounds .....	50
Fig 10.9.3: Adding a Background Color .....	51
<b>10.10. Photos .....</b>	<b>51</b>
Fig 10.10: Photos .....	51
<b>10.10.1. Icon Descriptions.....</b>	<b>52</b>
<b>10.10.2. Photo Recommendations.....</b>	<b>52</b>
<b>10.10.3. Adding Photos.....</b>	<b>52</b>
<b>10.10.4. Gallery.....</b>	<b>53</b>

Fig 10.10.4: Gallery .....	53
<b>10.10.5. Photo Box:</b> .....	53
Fig 10.10.5.: Photo Box .....	54
<b>10.10.6. Borders</b> .....	54
<b>10.10.7. Shadows</b> .....	54
Fig 10.10.7(a) - Shadows .....	54
Fig 10.10.7 (b): Shadows .....	55
<b>10.10.8. Nudge</b> .....	55
<b>10.10.9. Remove Red Eye</b> .....	56
Fig 10.10.9 (a): Remove Red Eye .....	56
Fig 10.10.9 (b): Remove Red Eye .....	57
Fig 10.10.9 (c): Remove Red Eye.....	57
<b>10.10.10. Photo Effects</b> .....	57
Fig 10.10.10: Photo Effects .....	58
<b>10.10.11. Photo Edit:</b> .....	58
Fig 10.10.11. Photo Edit .....	59
<b>10.11. Text</b> .....	59
<b>10.11.1. Adding Text:</b> .....	59
Fig 10.11.1: Adding Text .....	60
<b>10.11.2. Edit Text:</b> .....	60
Fig 10.11.2: Edit Text .....	61
<b>10.11.3. Text Font:</b> .....	61
Fig 10.11.3: Text Font .....	61
<b>10.11.4. Save Text:</b> .....	61
Fig 10.11.4: Save Text .....	62
<b>10.11.5. Text Case Tools</b> .....	62
Fig 10.11.5: Text Case Tools .....	62
<b>10.11.6. Font Types</b> .....	62
Fig 10.11.6: Font Types .....	63
<b>10.12. Address Book and Mail Merge</b> .....	63
Fig 10.12: Address Book and Mail Merge .....	63
<b>10.12.1. Import an Address Book</b> .....	63
<b>10.12.2. Add Contact Details</b> .....	64

<b>10.12.3. Print Preview .....</b>	<b>64</b>
Fig 10.12.3. Address Book and Mail Merge .....	65
<b>10.13. Headlines .....</b>	<b>65</b>
Fig 10.13: Headlines.....	66
<b>10.13.1. Adding Headlines .....</b>	<b>66</b>
Fig 10.13.1: Adding Headlines .....	66
<b>10.13.2. Fill Tab.....</b>	<b>66</b>
Fig 10.13.2: Fill Tab .....	67
<b>10.13.3. Stroke Tab.....</b>	<b>67</b>
Fig 10.13.3: Stroke Tab .....	68
<b>10.13.4. Shadow Tab .....</b>	<b>68</b>
Fig 10.13.4.: Shadow Tab .....	68
<b>10.13.5. Shape Tab .....</b>	<b>68</b>
Fig 10.13.5.: Shape Tab .....	69
<b>10.13.6. 3D Tab.....</b>	<b>69</b>
Fig 10.13.6: 3D Tab .....	69
<b>10.14. Calendar.....</b>	<b>70</b>
Fig 10.14: Calendar .....	70
<b>10.14.1. Add Calendar to A Page.....</b>	<b>70</b>
<b>10.14.2. Calendar Settings .....</b>	<b>71</b>
Fig 10.14.2.: Calendar Setting .....	71
<b>10.14.3. Line Settings.....</b>	<b>71</b>
Fig 10.14.3: Line Setting.....	72
<b>10.14.4. Numbers Settings.....</b>	<b>72</b>
Fig 10.14.4: Number Setting .....	72
<b>10.15. Clip Art .....</b>	<b>72</b>
<b>10.15.1. Icon Descriptions.....</b>	<b>72</b>
Fig 10.15.1: Clip Art .....	73
<b>10.15.2. Adding Clip Art.....</b>	<b>73</b>
Fig 10.15.2: Adding Clip Art.....	74
<b>10.15.3. Cropping Clip Art Images.....</b>	<b>74</b>
Fig 10.15.3: Cropping Clip Art Images.....	74
<b>10.16. Shapes and Lines.....</b>	<b>75</b>

Fig 10.16- Shapes and Lines .....	75
<b>10.16.1.    Icon Descriptions:</b> .....	75
<b>10.16.2.    Adding Shapes</b> .....	76
Fig 10.16.2: Adding Shapes .....	76
<b>10.16.3.    Replace Shape</b> .....	76
Fig 10.16.3: Replace Shape .....	77
<b>10.16.4.    Fill the Shape with the Background Paper</b> .....	77
<b>10.16.5.    Fill the Shape with a Photo</b> .....	77
Fig 10.16.5: Fill the Shape with a Photo.....	77
<b>10.17.    Draw Line</b> .....	77
Fig 10.17: Draw Line .....	78
<b>10.18.    Paint</b> .....	78
Fig 10.18: Paint.....	79
<b>10.19.    Project</b> .....	79
Fig 10.19: Project.....	80
<b>10.19.1.    Project Preview</b> .....	80
Fig 10.19.1: Project Preview.....	80
<b>10.20.    Spell Checker</b> .....	80
<b>10.21.    Project Output Preparation</b> .....	81
Fig 10.21: Project Output Preparation.....	82
<b>11.    Customer Support</b> .....	82
<b>12.    SHARING YOUR PROJECT</b> .....	82
Fig 12: Sharing Your Project .....	83
<b>12.1.1.    Print</b> .....	83
Fig 12.1.1: Print .....	83
<b>12.1.2.    Export</b> .....	84
Fig 12.1.2: Export.....	84
<b>12.1.3.    Image Type</b> .....	84
<b>12.1.4.    Image Size</b> .....	84
<b>12.1.5.    File Compression</b> .....	85

## Copyright Information

### PrintMaster 2020

Copyright © 2020 Encore Software, LLC. And its licensors. All Rights Reserved. Unauthorized reproduction of the software is a violation of applicable copyright laws.

### Clip Art, Design Elements and Page Layouts

Copyright © 2020 Encore Software, LLC. All Rights Reserved. Unauthorized reproduction is a violation of applicable copyright laws. Content cannot be used in any form for commercial use without express written consent from Encore Software, LLC.

### Store Content

Copyright © 2020 Encore Software, LLC and its licensors. All Rights Reserved. Unauthorized reproduction is a violation of applicable copyright laws. Content cannot be used in any form for commercial use without express written consent from Encore.

### The Sentry Spelling-Checker Engine

Copyright © 2000 Wintertree Software, LLC.

### Trademarks

The PrintMaster 2020, Broderbund and Encore logos are trademarks of Encore Software, LLC.

Copyright © 2020 Encore Software, LLC. All rights reserved. This document and the software that it describes are furnished under a license and may only be used in accordance with the terms of such license.



## Legal Copy

PrintMaster 2020 © Encore Software, LLC. All rights reserved. The Print Shop and Broderbund are registered trademarks of HMH Consumer Company Limited, used under license. © 1998 John McPherson/Distributed by Universal Press Syndicate. The PhotosToGo™ Images in this product are copyrighted by Index Stock Photography Inc. A portion of the images © Christie's Images Ltd. A portion of the images © The Bridgeman Art Library/Christie's Images. A portion of the images © The Luis A. Ferre Foundation, Ponce, Puerto Rico/Christie's Images Ltd. A portion of the images © 1998 Janet Carder. A portion of the fonts © 2001 Bitstream Inc. Portions of content © 1999-2009 Getty Images, Inc. All rights reserved. Portions of content © 1994-2009 Jupiterimages Corporation. All rights reserved by their respective owners. Close to Home is a trademark of John McPherson, used under license. Microsoft, Windows, Windows Vista, and the Windows logo are either registered trademarks or trademarks of Microsoft Corporation in the United States and/or other countries. All other trademarks are the property of their respective owners. All rights reserved. USE OF THIS PRODUCT IS SUBJECT TO CERTAIN RESTRICTIONS AND LIMITATIONS OF WARRANTY UNDER THE LICENSE AGREEMENT CONTAINED HEREIN.

## 1.PrintMaster 2020 USER GUIDE

Unleash your imagination with PrintMaster 2020, the quintessential toolkit for creating thousands of amazing projects – photo greeting cards, family newsletters, scrapbook pages and much more! With an enormous library of designer templates, premium artwork and expressive fonts, producing "professional-quality" creations has never been easier. Let's get started.

## 2.What's New in PrintMaster 2020?

- Enhanced User Interface
- Share Project by Gmail
- Create Custom Borders
- Line Arrowhead
- Line Patterns
- Change Shape Outline
- Add Customize Text into Shape
- New Auto-Save Functionality
- Improved Printing Wizard
- Customized Print Options

## 3.Key Features in PrintMaster 2020?

- Over 15,000 + Brand New, Royalty-Free, Commercial-Use
- Ready-Made Templates 6,500 +
- Clip Art and Images 20,000+
- Royalty-Free Ready-made Templates 1,000 +

- Modern User Interface
- Powerful New Text Handling Capabilities
- New Address Book and Mailing Features
- Master Project Page for Multipage Projects
- New Photo Fonts, Paint Brushes, and Styles
- New Right- Click Snap to Guideline, Center and Edge Options
- Paint functionality is included in Design Tools
- A line Thickness feature included in Shapes and Lines
- Search Functionality Added in ClipArt

## 4.Video Tutorials

Video Tutorials are available that demonstrate many of the new features found in PrintMaster 2020: [https://www.youtube.com/channel/UCatgw37O3mupzZDSNVxS\\_yA/videos](https://www.youtube.com/channel/UCatgw37O3mupzZDSNVxS_yA/videos)

## 5.Usage of this Guide

This guide is separated into 4 major sections:

1. Installation and Recommendations.
2. Interface Reference.
3. How to use PrintMaster 2020.
4. Sharing Completed Projects.

## 6. Overview of New Features

### 6.1. Enhanced User Interface:

We have improved the UI of PrintMaster 2020 by changing its theme. Figure 6.1 is an example of the user interface's new look and feel and is easier to use than the earlier version of PrintMaster.

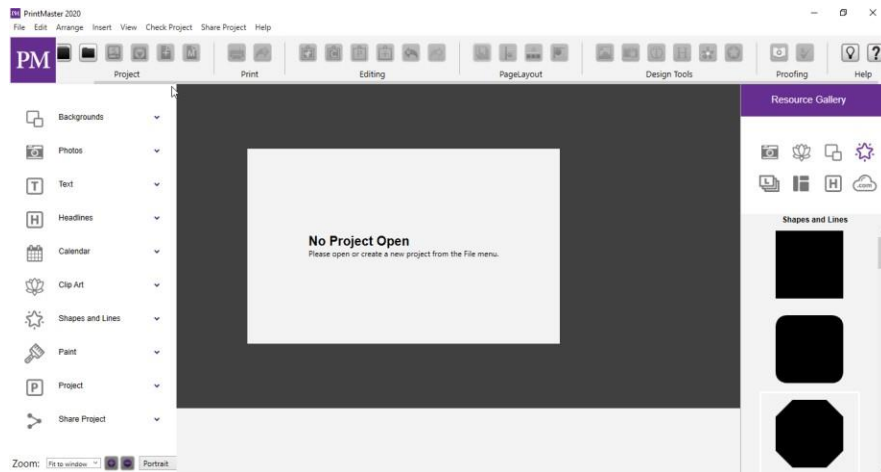


Fig 6.1: Enhanced User Interface

### 6.2. Share Project by Gmail:

In the 2020 version of PrintMaster, you can share your project through Gmail. Users can share a project by entering his/her email address and receiver email addresses. Fig 6.2

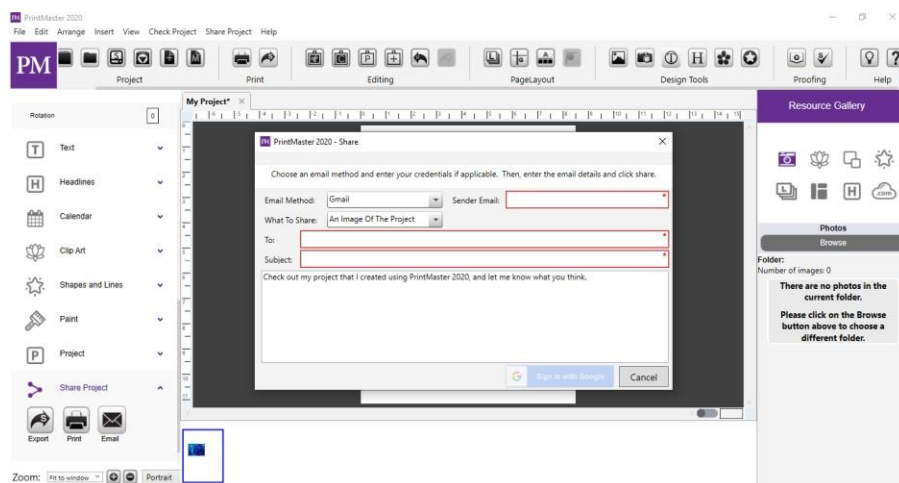


Fig 6.2- Share Project by Gmail

### 6.3. Create Custom Borders:

Users can add a custom border in PrintMaster by adding images to the borders, changing colors, and adding text in it. Fig 6.3

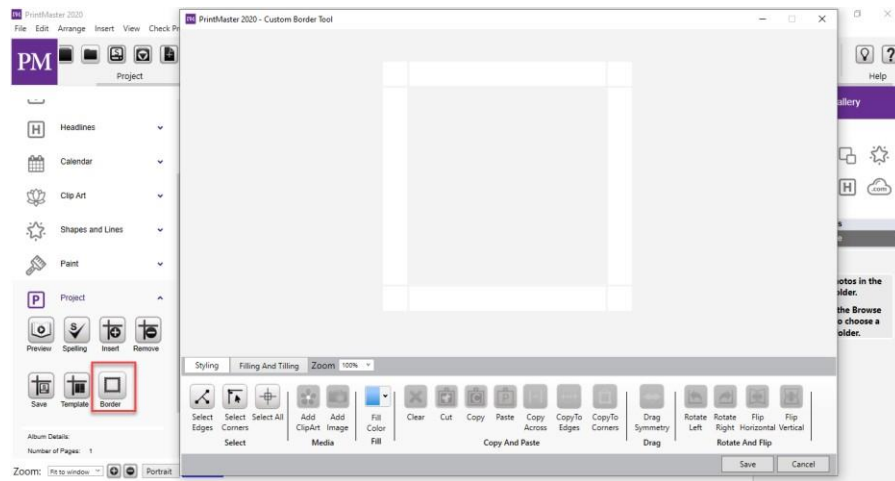


Fig 6.3: Create Custom Borders

### 6.4. Line Arrowhead

PrintMaster 2020 allows users to add different types of arrowheads on line to point something in a particular dimension. Fig 6.4

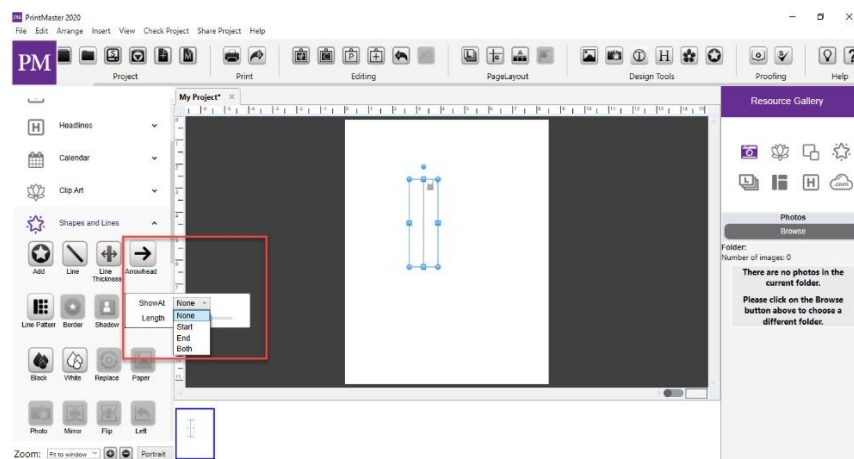


Fig 6. 4: Line Arrowhead

## 6.5. Line Patterns

PrintMaster 2020 allows users to change line patterns such as dotted, square boxes and more.  
Fig 6.5

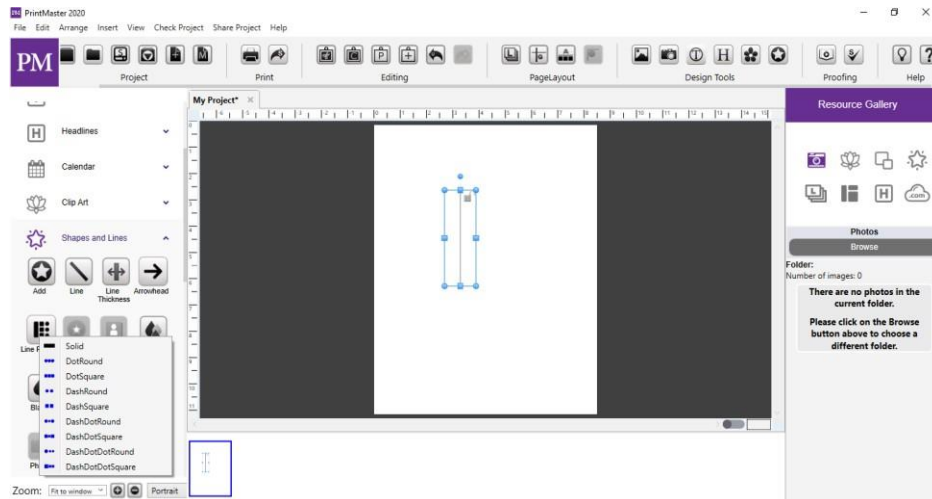


Fig 6.5: Line Patterns

## 6.6. Change Shape Outline

In PrintMaster 2020 users can change a shape's dimensions and can customize it accordingly. Fig 6.6

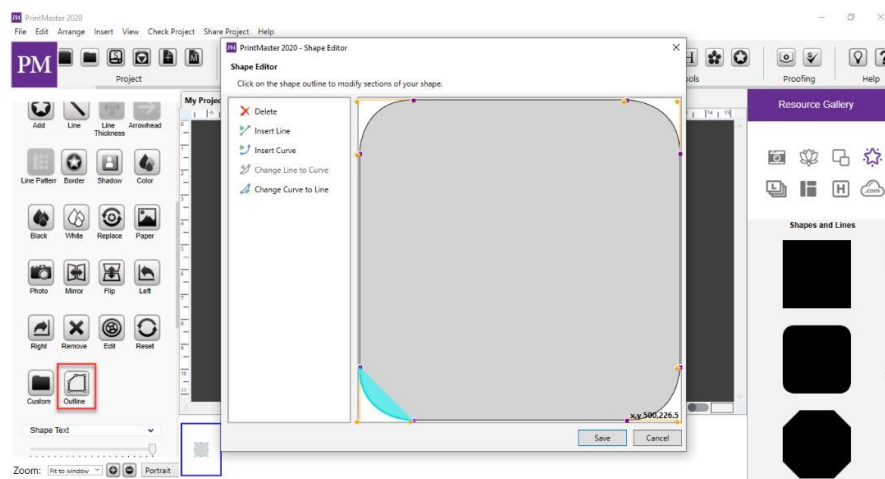


Fig 6.6: Change Shape Outline

## 6.7. Add Customize Text into Shape

From this functionality, users can change and customize text inside shape by changing its style like bold italic, height, width, and size. Fig 6.7

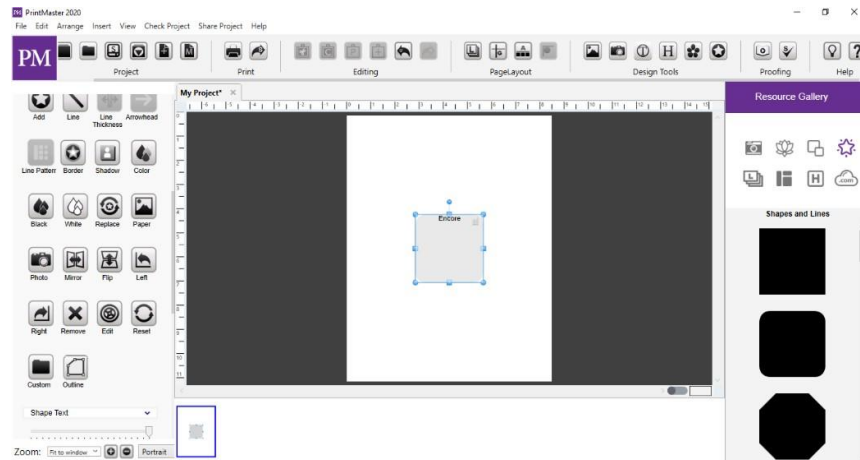


Fig 6.7: Add Customize Text into Shape

## 6.8. New Autosave Functionality

The autosave functionality will save your project every few minutes or based on the parameters you set and help minimize the loss of your project. Fig 6.8

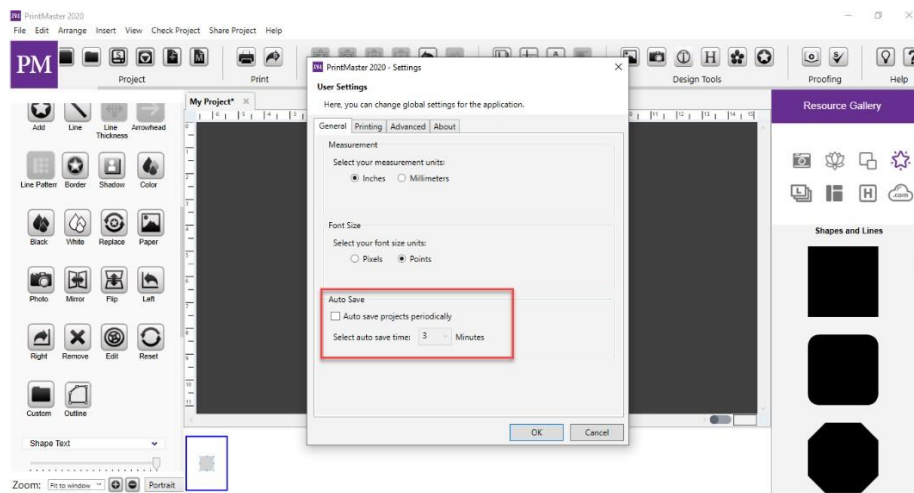


Fig 6.8: New Autosave Functionality



## 6.9. Improved Printing Wizard

Print Preview has been added to allow a user to view their projects. Fig 6.9

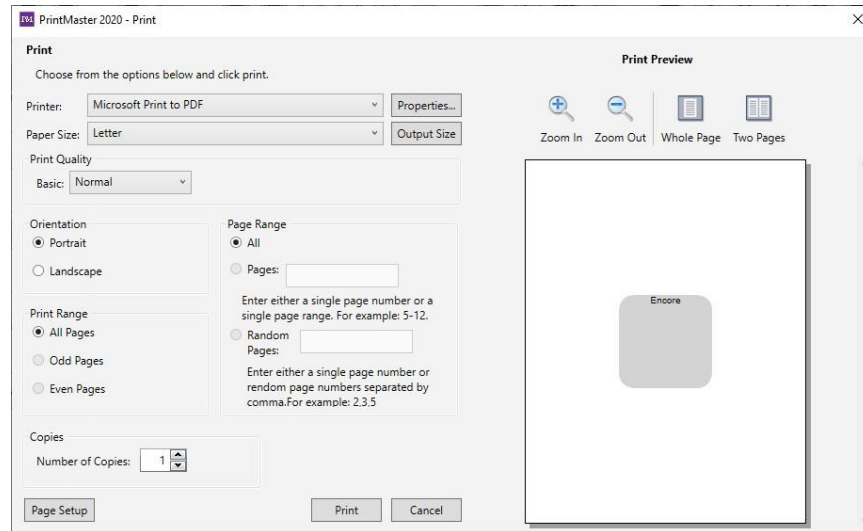


Fig 6.9: Improved Printing Wizard

## 6.10. Customized Print Options

Users have the option to customize the printing options. Users can print all pages, one page, or selected pages. Fig 6.10

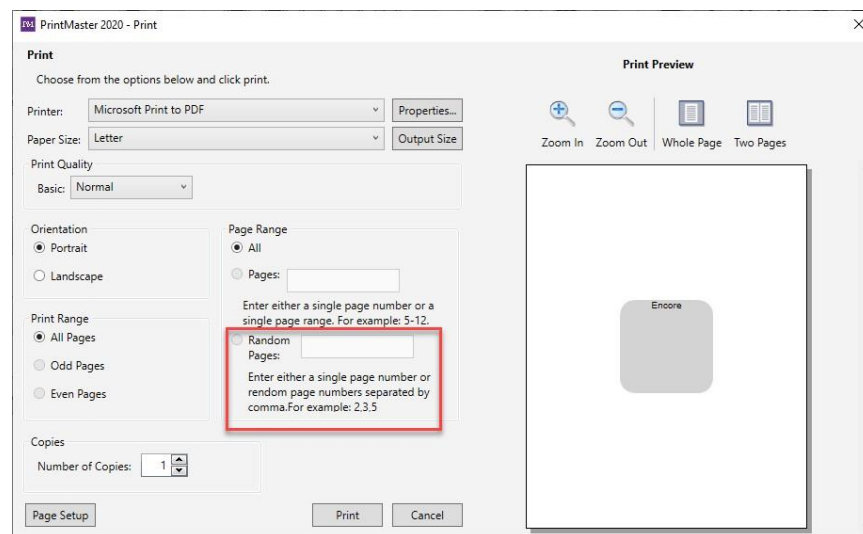


Fig 6.10: Customized Print Options



## 7.INSTALLATION AND RECOMMENDATIONS

### 7.1. System Requirements

Prior to installing PrintMaster 2020, ensure that your computer meets the following:

Windows:

- Windows 7, 8 or 10
- 2 GB RAM or more recommended 64 MB video RAM recommended)
- DVD-ROM drive
- Available Hard Disk Space: Install disc requires about 3.0 GB (Platinum) or 1.7 GB (Gold). Downloadable clip art and templates ca require up to 36 GB (Platinum) or 22 GB (Gold) of hard drive space.
- Broadband internet connection required Keyboard and mouse

### 7.2. System Settings

- Monitor Resolution: 1152 x 864 or higher recommended
- Recommended Additional Equipment
  1. Printer
  2. Digital Camera

## 8. Installing PrintMaster 2020

### 8.1. Installing PrintMaster 2020 from disc:

1. Insert the PrintMaster 2020 disc into your computer DVD drive.
2. The disc should open automatically. If it does not double-click on the disc icon.
3. Double-click on the PrintMaster 2020 installer icon or setup.exe.
4. You will be prompted to open or run the application, click Open or Run.
5. If prompted, enter your computer password, or if prompted with a UAC select Yes.
6. Keep the default settings and locations, if you need to do a custom installation, please reach each step carefully.
7. The installation will automatically open a web page to register.
8. When done registering, close the page to return to the installer.
9. When installation gets completed, click Finish to close the installation window.

### 8.2. Installing PrintMaster 2020 from the download:

1. Select the download link from the provided site or email.
2. The download will begin automatically, please be patient while it downloads.
3. If you are using Safari or Google Chrome, it will download automatically once the link is clicked.
4. If you are using IE or Firefox, you may be prompted to Save or Open a file, choose Save.
5. After the download completes the installer will be saved in your Downloads folder by default.
6. Open your downloads folder. (HD or C:/Users/<current user>/Downloads)
7. Double-click on the PrintMaster 2020 installer.
8. You will be prompted to open or run the application, click Open or Run.
9. If prompted, enter your computer password, or if prompted with a UAC select Yes.
10. Keep the default settings and locations, if you need to do a custom installation, please reach each step carefully.
11. It will automatically open a web page to register. When done registering, close the page to return to the installer.
12. When installation gets completed, click Finish to close the installation window.

### 8.3. Important Project Information

To avoid problems while creating projects, please review the following:

1. Do not delete your project files. Keep your project and all related files on your computer's hard drive until you have created the final output (print, photo album, etc.).
2. Check your project.

Follow the steps in the Check Project menu prior to sharing your project.

- a) Exit the software. Always exit the software before turning off your computer to avoid corrupting your project.
- b) Adequate hard drive space. Projects require large amounts of hard drive space. Ensure you have a minimum of 10GB available disk space. If you run out of space while you are building your project, you may lose some of your work.
- c) Backup your projects. To avoid losing your work, we recommend occasionally backing up your projects to an external drive. (File menu > Save As)
- d) Trim area for uploaded projects 1/2" Prevent images and text from being cut when professionally printed by keeping the layout within 1/2" on all sides.
- e) Updates. Occasional updates include enhanced features and bug fixes. We recommend installing any updates. (Help menu > Check for updates)

### 8.4. Avery® Template Support

1. PrintMaster 2020 includes project types that are compatible with Avery templates (see <https://www.avery.com/> for information on Avery products).
2. Check the description of Ready- Made project templates and custom project types when creating your project for information about Avery template compatibility. Make a note of the Avery template(s) the project is compatible with.
3. Printing Multiple Single Items on an Avery Template
4. Certain project types, like mailing labels and business cards, can be formatted for printing on an Avery template. After creating the project, choose Edit > Convert to Full Avery Sheet from the menu. Then print the project to the appropriate Avery template.
5. The project type must be Avery-compatible with this menu option to be enabled.

## 9. INTERFACE REFERENCE

PrintMaster 2020's interface can be divided into five areas as shown in fig 9.-

1. Page Canvas- The canvas is, where you can create the project by adding backgrounds, images, and other objects on the page.
2. Page Thumbnails- The bottom area displays thumbnails of your pages. In addition, you can delete or rearrange the page order.
3. Gallery: Add page elements from this panel into the canvas with a double-click or drag and drop.
4. Menus and Toolbars: Most application functions can be accessed through this tab.
5. Design Tools: Add and edit your project elements by using these panels.

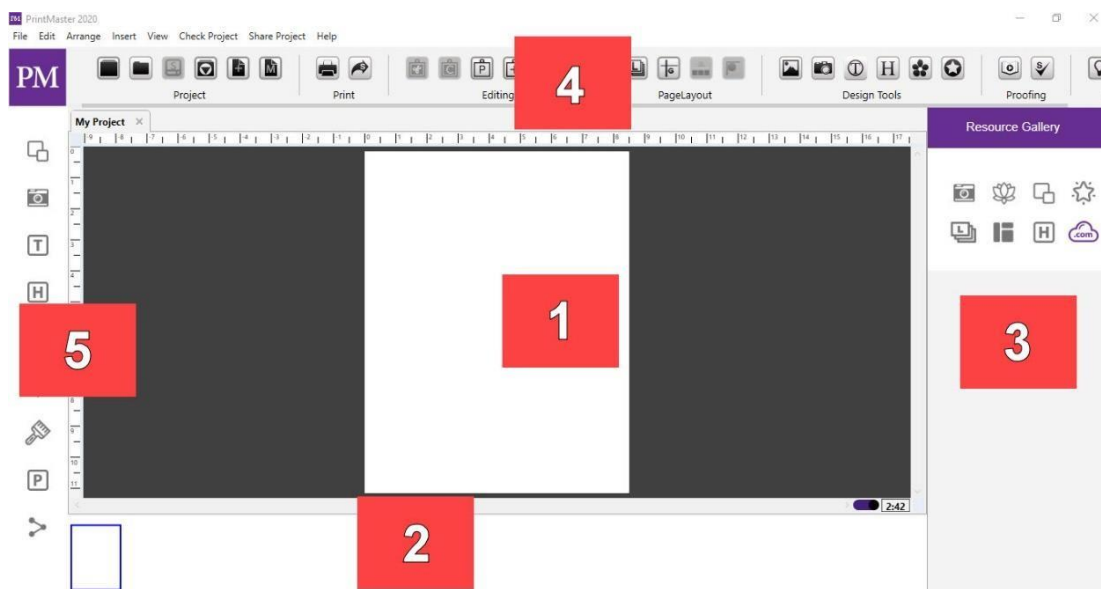


Fig 9: Interface Reference

### 9.1. Page Canvas:

Add backgrounds, clip art, images, text, and other objects to create your projects.

#### Right-Click Options:

1. Right-clicking on an empty page canvas brings up paste options. Fig 9.1

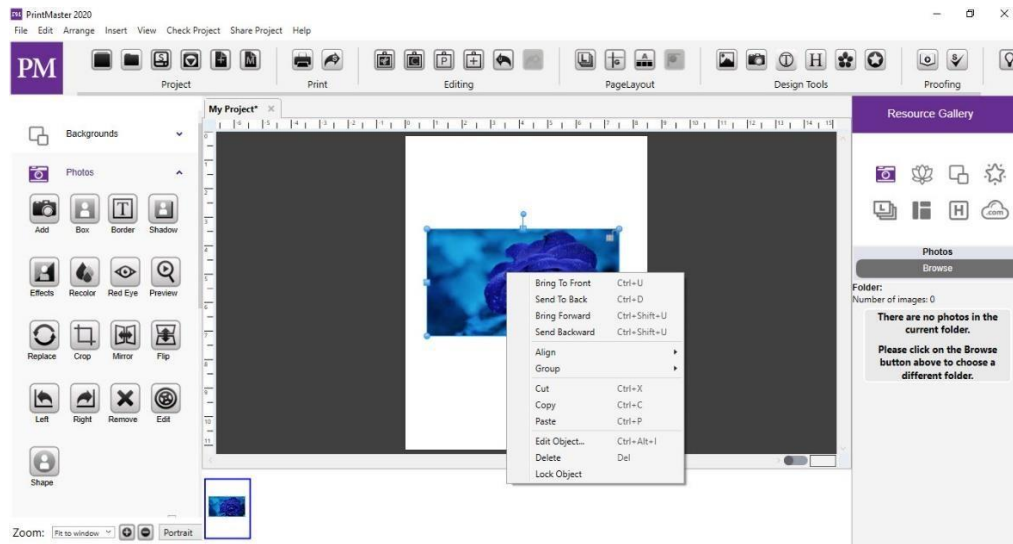


Fig 9.1: Right-Click Options

2. Right-click on an object to bring up the following options:

- Bring to Front – Places the object on top of all other objects.
- Send to Back – Places the object behind all other objects.
- Bring Forward – Moves the object up one layer.
- Send Backward – Pushes the object back one layer.

3. Align: Provides the following options for aligning objects with each other, or the page:

- Top - Aligns all selected objects to the top-most object on the page.
- Middle - Lines up the vertical middle of each selected object.
- Bottom - Aligns all selected objects to the bottom-most object on the page.
- Left - Align all selected objects to the leftmost object on the page.
- Center - Lines up the horizontal center of each selected object.
- Right - Aligns all selected objects to the right-most object on the page.
- Center Vertical - Places all selected objects in the vertical center of the page.
- Center Horizontal - Places all selected objects in the horizontal center of the page.
- Space Evenly – Horizontal – Horizontally spaces each object equal distances.
- Space Evenly – Vertical – Vertically spaces each object equal distances.

4. **Group:** Fixes the position of objects in relation to one another so that they can be moved, resized, and rotated without changing their position relative to each other:
  - Mirror Group – Mirrors all objects in the selected group horizontally.
  - Flip Group – Flips all objects in the selected group vertically.
  - Ungroup – Returns a group of objects to individual objects.
5. Round Corners: It allows you to toggle each corner of the image to round or sharp.
6. Set Photo as Background: Sets the selected photo as the page background.
7. Rip Photo Edges: Randomly rips one or more edges of the selected photo.
8. Attach to Shape: Select both a text box and a shape by holding shift, the text will then fill the shape.
9. Detach from Shape: Removes the text from an attached “text to shape” object.
10. Hi-Res Preview: Shows a print quality preview of the selected object.
11. Cut: Removes a page object from the page, but saves it in memory.
12. Copy: Saves a page object in memory.
13. Paste: Paste the page object onto the page. Pasted objects will be slightly offset.
14. Edit Object: Object size, location, and information. It also lets you adjust the size.
15. Delete: Removes a page object from the page.
16. Lock Object: Locks the object so that it cannot be edited.
17. Unlock page Object: If you right-click on a locked object, you may unlock it to edit it.
18. Span Pages: If you have page spreads enabled: Use this feature to allow the image to span between pages, rather than being cut when it reaches the edge of the canvas.
19. Double-Click:
  - Double-click a photo to open the crop function.
  - Double-click a photo box, to add a photo to the empty box.
  - Double-click a clip art or shape to bring up object settings.
  - Double-click a text box to edit the text.
  - Double-click a headline to edit the headline.
  - Double-click a calendar to open the Calendar Settings window.
  - Double-click a paint box to add new brush lines or erase.

## 9.2. Page Thumbnails

The bottom portion of PrintMaster 2020 displays a thumbnail of the pages in the project.  
Fig 9.2

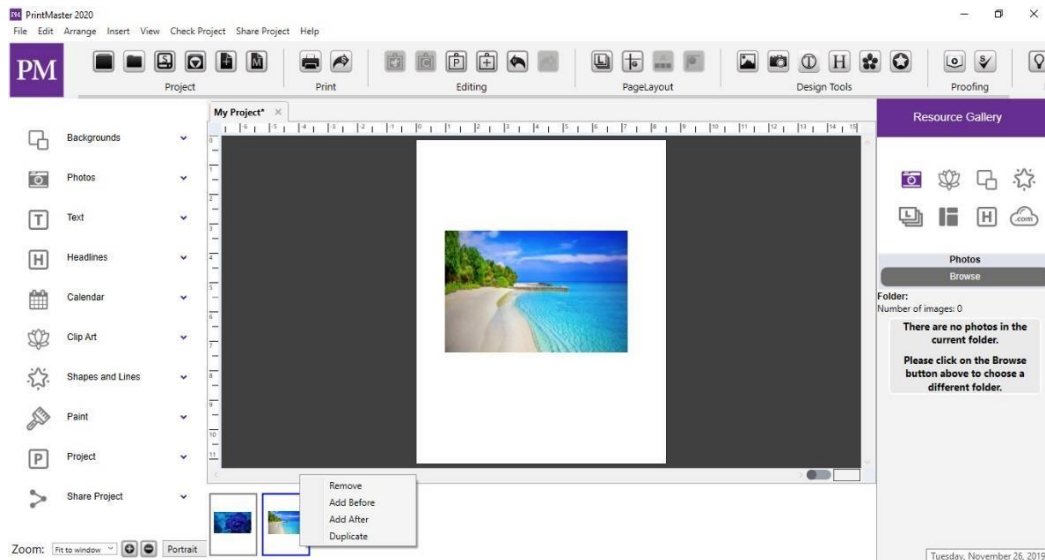


Fig 9.2: Page Thumbnails

1. **Reordering Pages:** To move a page to a different position in the project, click on the page thumbnail, hold down the left-mouse button, and drag the page right or left for a new position and release.
2. **Right-Click Options:** Right-clicking on a thumbnail displays the following functions:
  - **Insert Page After** – Opens the Add New Page dialog. Create a new page with the selected layout after the page you right-clicked on.
  - **Insert Page Before** – Opens the Add New Page dialog. Create a new page with the selected layout before the page you right-clicked on.
  - **Insert Duplicate Page** – Makes an exact copy of the right-clicked page.
  - **Delete Page** – Removes the page that you right-clicked.

## 9.3. Resource Gallery

Displays all images in the current folder or content category. Select an icon to change what type of content is displayed. Easily add elements from the gallery to the page canvas with a double-click, or drag and drop. Fig 9.3



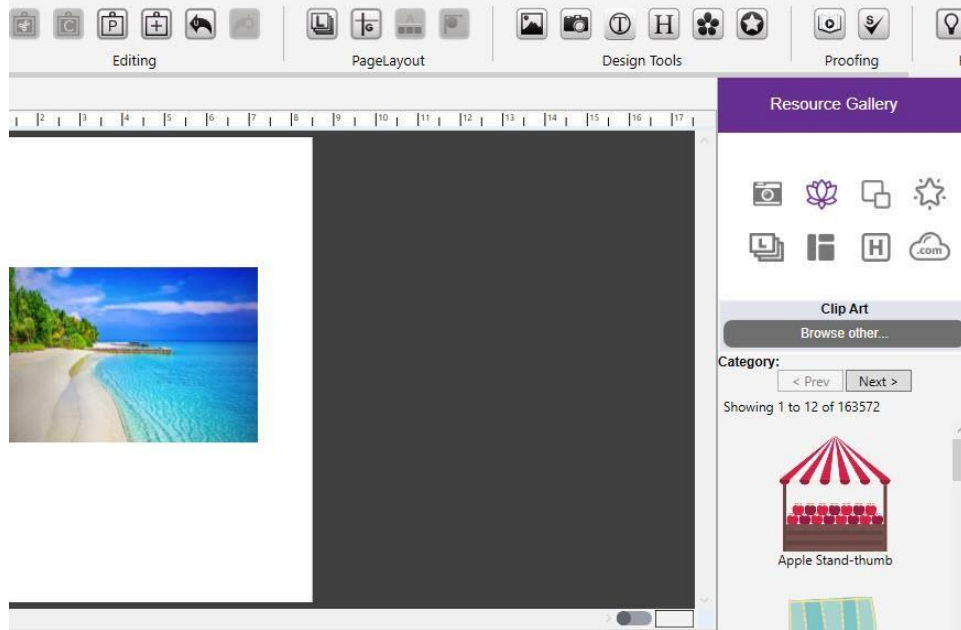


Fig 9.3.: Resource Gallery

1. Photos: Displays a list of images from a selected folder.
2. Clip Art: Displays a list of clip art from the selected category.
3. Backgrounds: Displays a list of background papers from the selected category.
4. Shapes: Displays a list of shapes from the selected category.
5. Layers: Displays a list in order from top to bottom, of the items on your page:
  - Drag an object above, or below another in the list to change the layer position.
  - Double-clicking a layer in the list will select the object on the page.
  - Hide objects by clicking the checkbox.
  - Lock objects by clicking the lock icon.
  - Right-click on a layer object to preview, edit, or delete it.
6. Layouts: Displays a list of photo layouts, add or change the layout for the current page.
7. Headline: Displays a list of different headline types.
8. Store: Displays kits that you can add from

<https://www.broderbund.com/catalogsearch/result/?q=royalty+free>



## 9.4. Menus



Fig 9.4: Menus

1. PrintMaster 2020 menu (Windows only): About PrintMaster 2020—Copyright and version information.
  - Preferences: Change default program settings.
  - Services: Services for an operating system.
  - Hide PrintMaster 2020: Hide the PrintMaster 2020 program from view.
  - Hide Others: Hide all other open window applications from view.
  - Show All: Displays all hidden windows.
  - Quit PrintMaster 2020: Quits PrintMaster 2020.
2. File menu:
  - New Project: Closes the current project, and opens the new project window.
  - Open Project: Closes the current project and display options for opening an existing project.
  - Recent Projects: Displays a list of recently opened projects. Click on a project to open it.
  - Closure Project: Closes the current project.
  - Save: Writes the project in its current state to disk.
  - Save As: Writes the project's current state to disk in a custom location with a new name.
  - Save Photo Layout: Create a layout for later use, using the current photo and text boxes.
  - Delete Project: Delete a project permanently from your hard disk.
  - Rename Project: Rename the currently opened project.
  - Find Projects: Searches your computer for PrintMaster 2020 projects.
  - Print Setup: Opens the Page Setup window.
  - Print: Opens a print window for printing the project or individual pages.
  - Export: Opens a window for exporting the project or individual pages in various formats.
  - Exit: Closes the current project and quits PrintMaster 2020.

### 3. Edit menu:

- Undo: Cancels the last operation.
- Redo: Reverses the effect of the undo operation.
- Cut: Removes a page object from the page, but saves it in memory.
- Copy: Saves a page object in memory so that it may be pasted to another location.
- Paste: Adds the object from memory to the page (the object will be slightly offset).
- Paste in Place: Add the object from memory to the page without an offset.
- Clear: Permanently deletes a page object from the page.
- Edit Object: Displays object size and info. It also lets you adjust the size.
- Text Options: Update the case of selected text boxes. (UPPER, lower, Title, Sentence).
- Delete Object: Removes the selected page object from the page.
- Lock Object: Object cannot be edited or deleted.
- Unlock All Page Objects: Unlocks all objects on the current page for editing.
- Delete Shadow: Removes the shadow from the selected page object.
- Delete Page: Removes the currently selected page from the project.
- Find/Replace: Search and replace words in the project.
- Project Properties: Displays the Project Properties dialog.
- Change Project Size/Type: Change the current project to a different type and/or size.
- Convert to Full Avery Sheet: Create a compatible Avery template.
- Preferences: Opens the Preferences dialog to customize default program settings.

### 4. Arrange menu:

- Order: Adjusts the layer order of objects on the current project page.
- Align: Brings objects into alignment with each other or the page.
- Group: Fixes the position of objects red-eye one another.
- Ungroup: Returns a group of objects to individual objects.
- Select All: Selects all objects on the current page.
- Select All Clip Art: Same as Select All, except that it only selects clip art on the page.
- Change Background Paper: Allows you to choose the background for

the current page.

- Page Numbering: Add or customize page numbers in the project.

5. Insert menu:

- Add Page: Creates a new page in the project.
- Add Other Template Pages: Add a set of select template pages.
- Import from My Projects: Add pages from other projects to the current project.
- Fast Fill Photos: Add a group of photos to empty photo boxes in the project automatically.
- Add Photo: Choose a photo (JPG or PNG) to add to the current page.
- Add Clip Art: Opens a window for selecting clip art to add to the current page.
- Add Text: Places a text box on the current page.
- Add Headline: Places a headline box on the current page.
- Add Shape or Line: Displays a list of shapes that can be added to the current page.

6. View menu:

- View Project: Displays a preview of the way the project will appear in print.
- Bleed Area: Displays a darkened area around the page that may be cut when printed.
- Die lines: Hide/show cut and fold lines or instructions.
- Show Guides: Allows you to add guides to your page for easy alignment.
- Snap to Guides: Aligns objects to the guide when they are moved.
- Snap to Page Objects: Aligns object edge with other object edges on-page.
- Rulers: Displays rulers along the top and left the side of the page.
- Canvas Zoom: Opens a drop-down menu allowing you to zoom in or out.
- Page Spreads-Displays two pages side by side for easier editing and overlap.
- Previous Page: Selects and displays the previous page in the project.
- Next Page: Selects and display the next page in the project.
- Hide/Show Toolbar: Hides or displays the toolbar across the top of the interface.
- Hide/Show Design tools: Hides or displays the design tools on the left of the interface.

- Hide/Show Page Thumbnails: Hides or displays the page thumbs on the bottom.
- Hide/Show Resource Gallery: Hides or displays the gallery on the right of the interface.
- Master Page: Master overlay page, items added to the master are displayed on all pages.

7. Check the Project menu:

- Check Page for Errors: Checks for problems on the current page and displays a list of results.
- Check Project for Errors: Checks project for problems and displays a list of results.
- Check Spelling: Checks project for spelling errors and suggests changes.
- Lock Page: Page cannot be changed or deleted when locked.

8. Share Project menu:

- Print at Home: Opens the print wizard for printing to a connected home printer.
- Export: Prepares the project to be output to JPEG, PNG, PDF, or SVG files.
- Order Photo Album: Opens professionally print book upload window.
- Order Calendar: Opens professionally print calendar upload window.

9. Help menu:

- Search: Quickly search the User Guide for keyword related topics.
- PrintMaster 2020 Help: Opens the PrintMaster 2020 topics, and index help system.
- Check for Updates: Check for and install the latest version update.
- User Guide: Opens a PDF printable document for using PrintMaster.
- Video Tutorials: Website with video tutorials and other helpful resources.
- About PrintMaster 2020: Displays copyright and version information for PrintMaster 2020.

## 9.5. Colors

Click on the color icon under design tools to adjust colors for selected objects.

1. Palette: Select a color by clicking one of the color squares. Fig 9.5.1

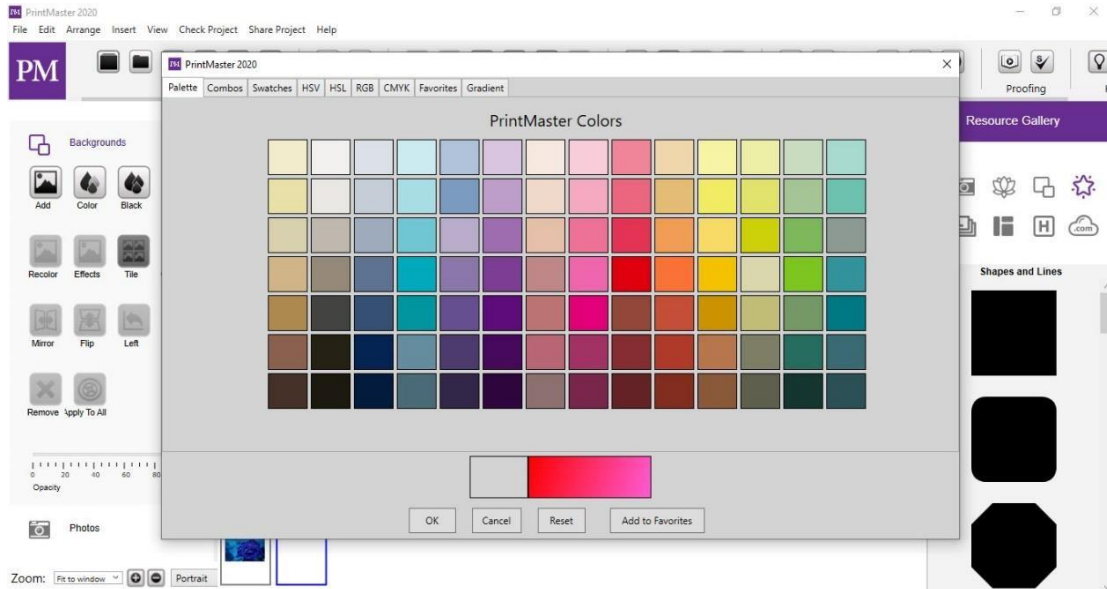


Fig 9.5.1: Palette

2. Combos: Select a color for suggested complementary color combinations. Fig 9.5.2

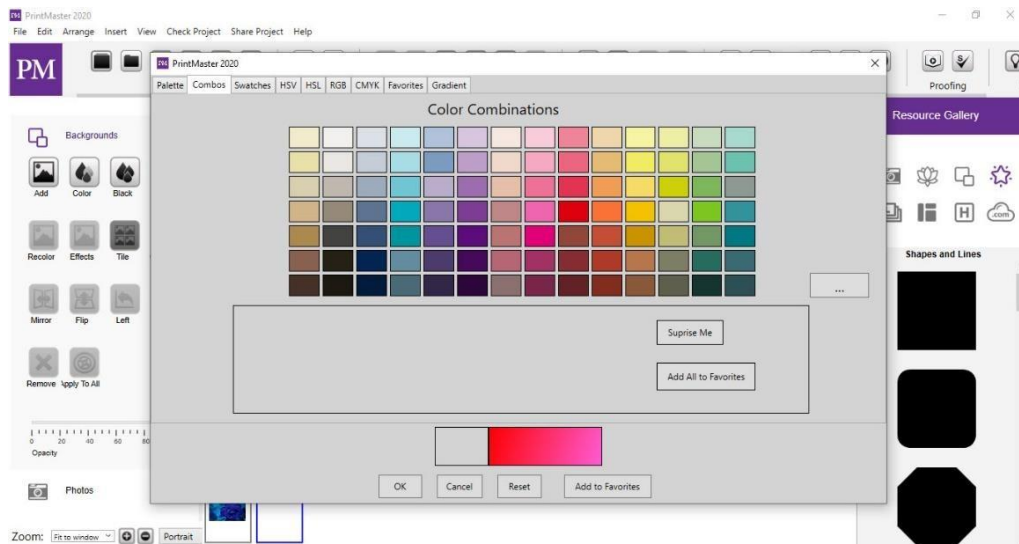


Fig 9.5.2: Combos

3. Swatches: A range of colors, select a color by clicking one of the color squares.

#### 4. HSV: (Hue, Saturation, and Value). Fig 9.5.4

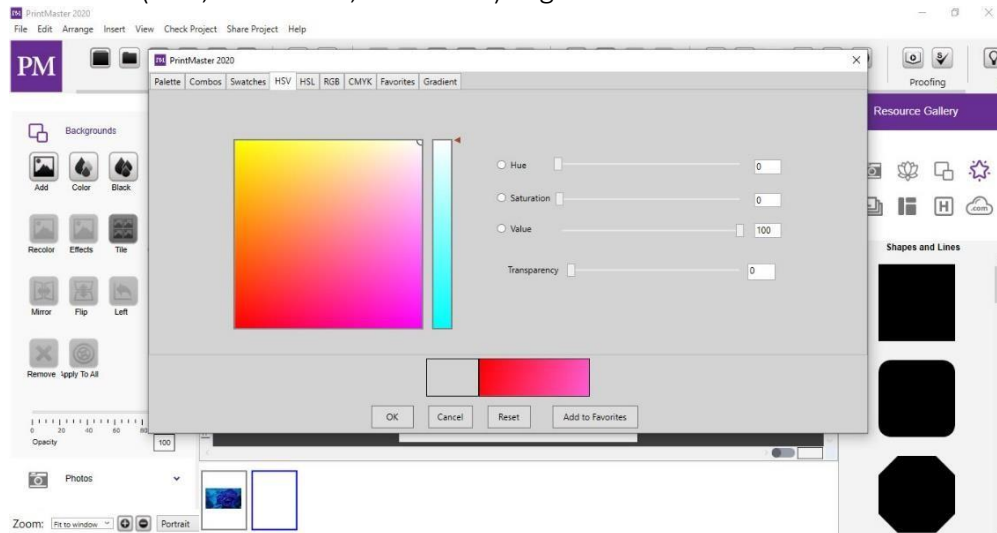


Fig 9.5.4: HSV

#### 5. HSL: (Hue, Saturation, and Lightness). Fig 9.5.5:

- Add or remove white, black, and gray, as well as lighten or darken a color.
- Move the slider up or down to choose the desired hue.
- Click-and-drag in large color box to adjust the white, black, and grey.
- You may also type, click on the arrows, or drag the sliders to adjust the values.

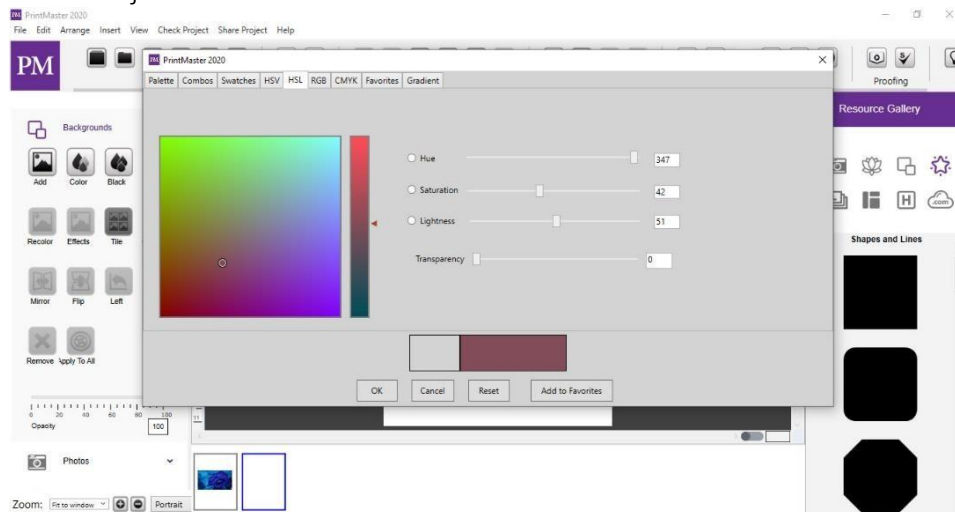


Fig 9.5.5: HSL

#### 6. RGB: (Red, Green, and Blue) Fig 9.5.6:

- A standard method of choosing colors based on red, green,



and blue values.

- Drag the red, green, and blue sliders to adjust the amount of each color.
- 0 is absence, and 255 is the maximum color value in the alpha slider.
- Color code is displayed for the values selected; you may also enter a color code.

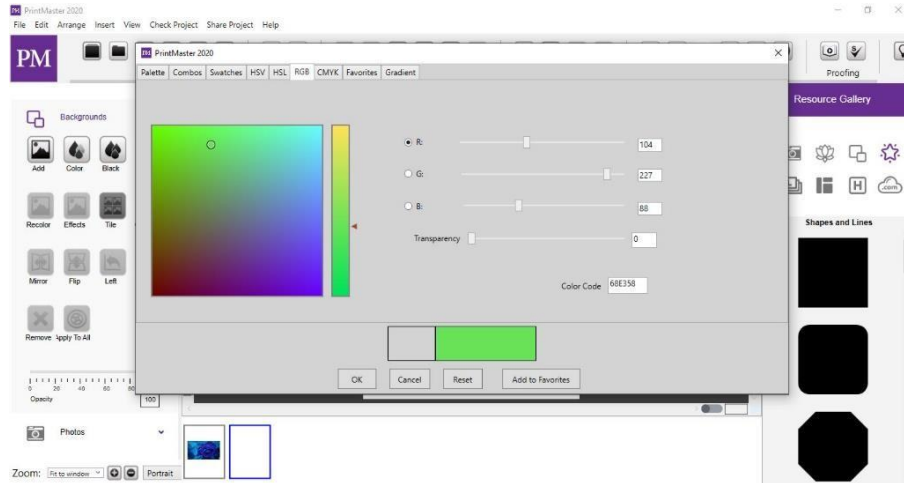


Fig 9.5.6: RGB

7. CMYK: (Cyan, Magenta, Yellow, and Key Black) Ink colors used more commonly in printing. Fig 9.5.7

- Drag the cyan, magenta, yellow, and key sliders to adjust the amount of each color.
- 0 is absence, and 255 is the maximum color value in the alpha slider.

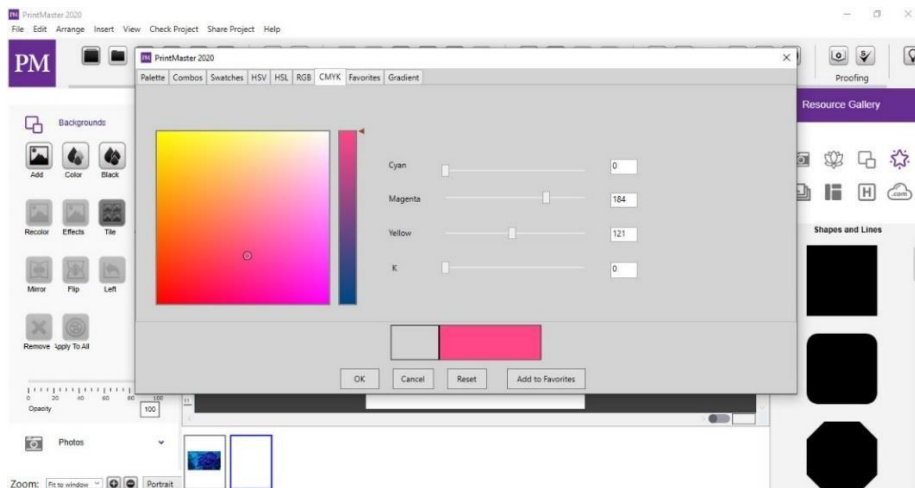


Fig 9.5.7: CMYK

8. Favorites: Store up to 40 of your favorite colors. Fig 9.5.8

- To save a color to Favorites, pick a color in any tab then click

Add to Favorites.

- Once 40 slots are filled, the oldest color will be removed when you add a new color.
- To remove a favorite color, select one, then click the remove favorite button.

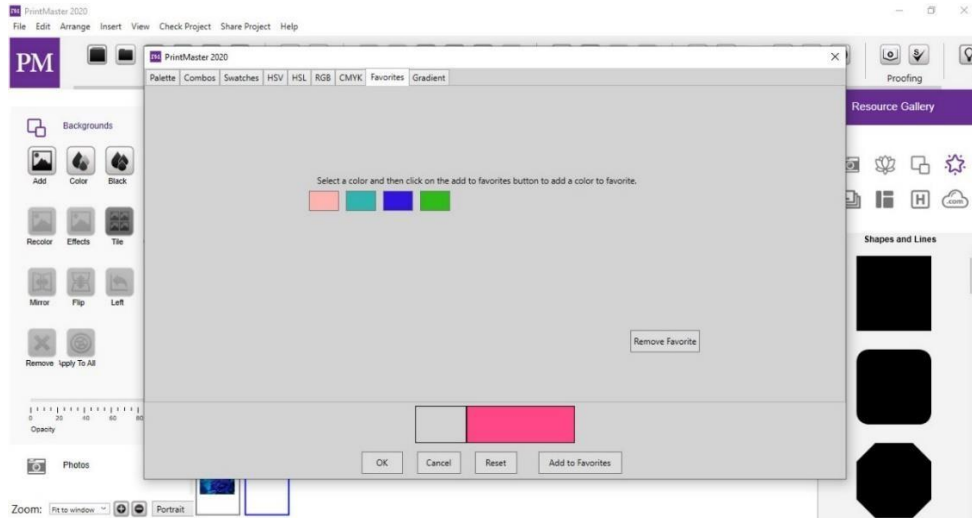


Fig 9.5.8: Favorites

9. Gradient: Gradient colors can be used with backgrounds, shapes, and headlines. Fig 9.5.9.

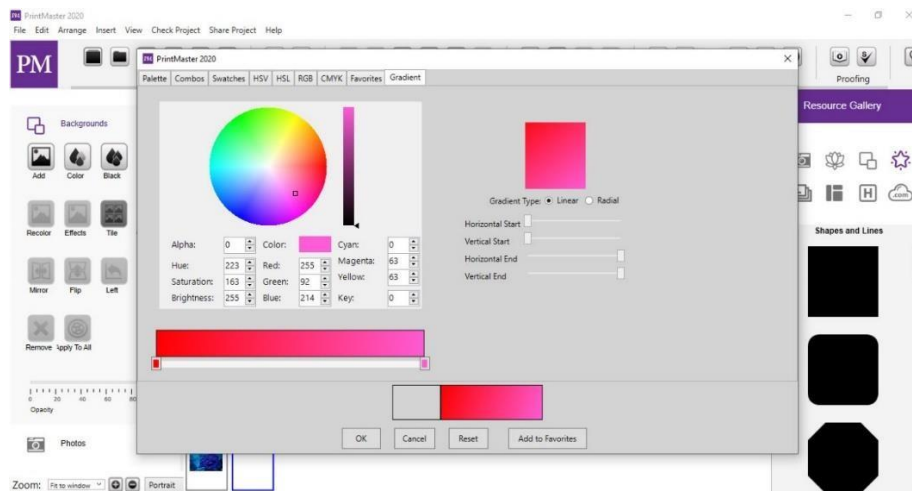


Fig 9.5.9: Gradient

10. Click one of the 2 small color squares above the gradient bar to select a gradient.
11. Then click on the larger color square to set the color for the selected gradient.
  - Drag the small circles in the preview area to manipulate the gradient.



- Clicking in the preview area moves the nearest circle to the position of your cursor.
- Add color places an additional gradient color in the top gradient bar.
- The style drop-down lets you choose between linear and radial gradients.
- You may change the pattern of the gradient by selecting reflect or repeat.
- Selecting reverse swaps, the gradient color direction.

## 9.6. Toolbar

The main toolbar contains the most common program functions.

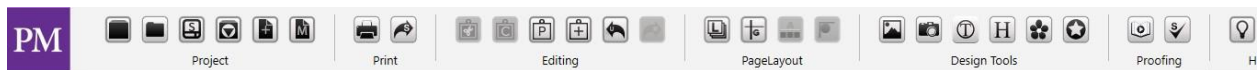


Fig 9.6: Toolbar

### 9.6.1. Icon Descriptions:

- New Project: Opens the new project window.
- Open a Project: Open an existing project.
- Save: Saves the project in its current state to disk.
- Import: Import pages from another project.
- Add New Page: Opens the Add New Page dialog.
- Layers: Displays the options for adjusting the object layer position.
- Page Guides: Display a guide to assist with accuracy when moving objects.
- Align Objects: Displays the options for changing the alignment of objects.
- Cut: Removes a selected object to the clipboard to be pasted in another location.
- Copy: Copies a selected object to the clipboard to be pasted in another location.
- Paste: Applies the page object stored in the clipboard to the current page.
- Paste in Place: Same as Paste, except that the pasted object does not paste offset.
- Undo: Cancels the last operation.
- Redo: Restores the “undone” operation.
- Convert Avery Template: Creates the Avery template project from a single item.

- Add Background: Add a background.
- Add Photo: Opens a window for importing a photo (jpg or png).
- Add Text: Creates a new text box on the page.
- Add Headline: Creates a new headline box on the page.
- Add Clip Art: Opens a window for adding clip art to the current page.
- Add Shape or Line: Opens a window for choosing a shape.
- Preview: Presents a preview of the way the project will appear in print.
- Check Spelling: Checks the spelling on all pages and suggests changes.
- Share: Share your pages as JPG, PNG, or PDF.
- Ideas: Opens a site with video tutorials, as well as other helpful resources.
- Help: Opens the PrintMaster 2020 help topics.

## 9.7. Design Tools



Fig 9.7: Design Tools

- Backgrounds: Allows you to add and edit background papers.
- Photos: Add and edit images.
- Text: Add and edit text, and address fields.
- Headlines: Add and edit headlines
- Calendar: Add and edit calendar months or years.
- Clip Art: Add and edit clip art to enhance the layout composition.
- Shapes and Lines: Add, edit, and create custom shapes.
- Paint: Add a paint area to the page, draw, edit, and erase.
- Project: See elements used, preview, error check, and manage page guides.
- Share Project: Options for printing at home, exporting, and ordering.

## 10. USING PrintMaster 2020

### 10.1. Starting a Project

When you first open PrintMaster 2020 project options are displayed. Fig 10.1

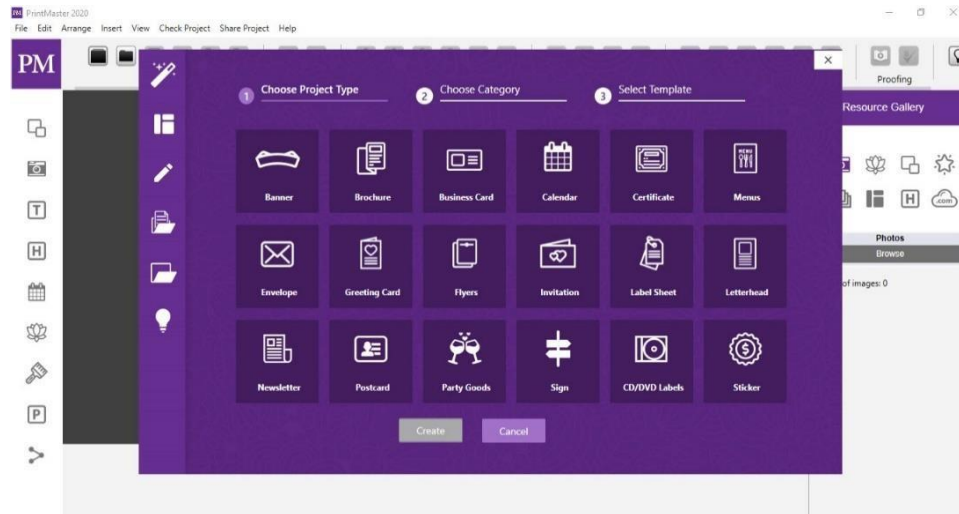


Fig 10.1: Starting a Project

1. Template: Create a project from a pre-designed layout.
2. Create from Scratch: Create a project from a blank canvas with a custom size.
  - Open: Open an existing PrintMaster 2020 project.
  - Recent: Click on one of 5 the most recent projects at the bottom to open it.

Return to this screen when opening the software, or by going to File > New.

### 10.2. Create from Template

1. Create a project from a pre-designed layout.
2. Select a project type on the left.
3. Next, select a desired template in the preview area then click Finish. Fig 10.2

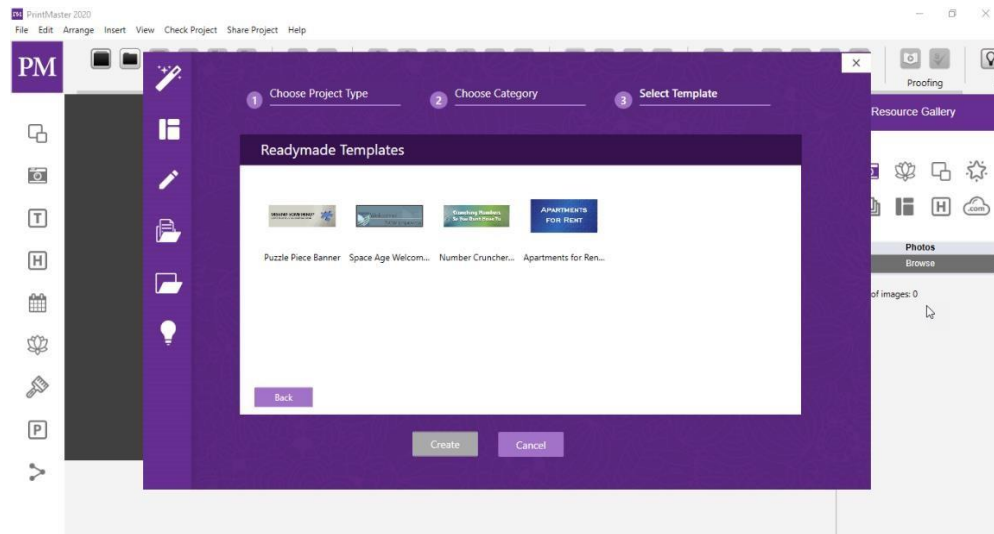


Fig 10.2: Create from Template

Tabs at the top sort project types:

- All Categories: All projects, organized by category and subcategory
- Print at Home: All projects, grouped by type
- Print Professionally: Projects that can be printed professionally
- Matching Sets: Projects with coordinating design themes
- Search for a project by typing keywords into the Search field below the project type.
- Drag the Preview Size slider at the bottom to display a larger preview.
- You may need to scroll down to see all of the choices available.
- Click on the plus symbol or arrow next to a type to display subcategories

### 10.3. Design Your Own

Create a project from a blank canvas with a custom or selected size. Fig 10.3

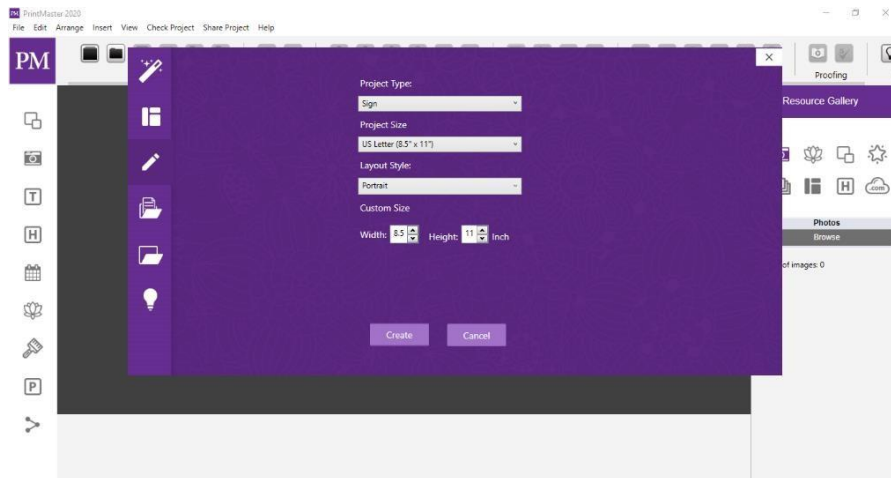


Fig 10.3: Design Your Own

1. Select a type from the Type drop-down menu.
2. Select a suggested size or enter your own, then click OK.
  - Some project types (business cards, mailing labels, etc.) allow many similar items on a page per print.
  - If the project type supports it, the Horiz. and Vert. Gap settings can be adjusted to set the amount of space between each item when printed.

## 10.4. Saving Projects

1. Save your project often. This will ensure that you don't lose work.
2. To save your project go to the File menu > Save.
3. You may also click the Save icon in the toolbar to save your project.
4. Pressing the key command (Control+S) will also save.

Note: The save icon will be disabled if all changes have been saved. Fig 10.4 (a)

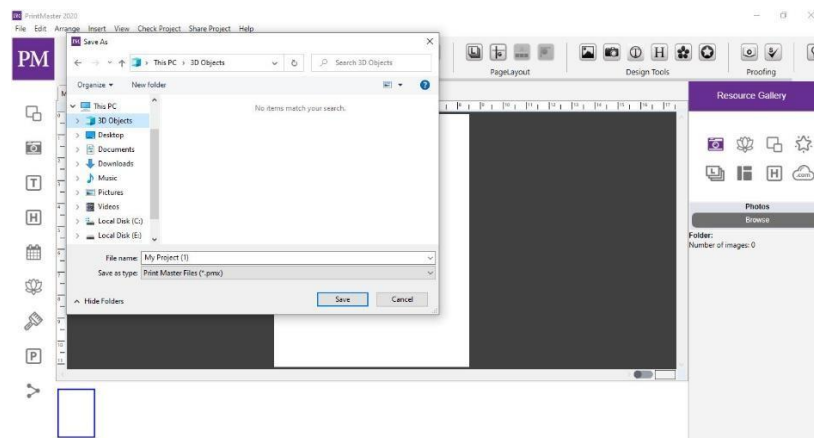


Fig 10.4 (a): Saving Projects

5. When first saving a project, you may enter a name, and choose where it saves.
6. Additionally, when closing or opening another project a save prompt is displayed. Fig 10.4 (b)

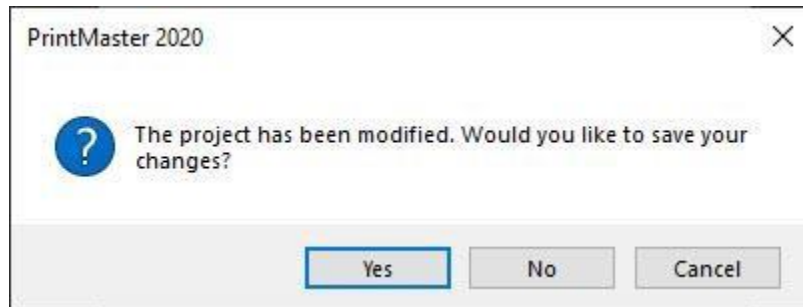


Fig 10.4 (b): Saving Projects

To make a copy and set a new save location for projects go to File menu > Save As.

## 10.5. Opening a Project

To open an existing project, do one of the following: Fig 10.5 (a)

1. Go to the File menu > Recent Projects, and select your project from the list.

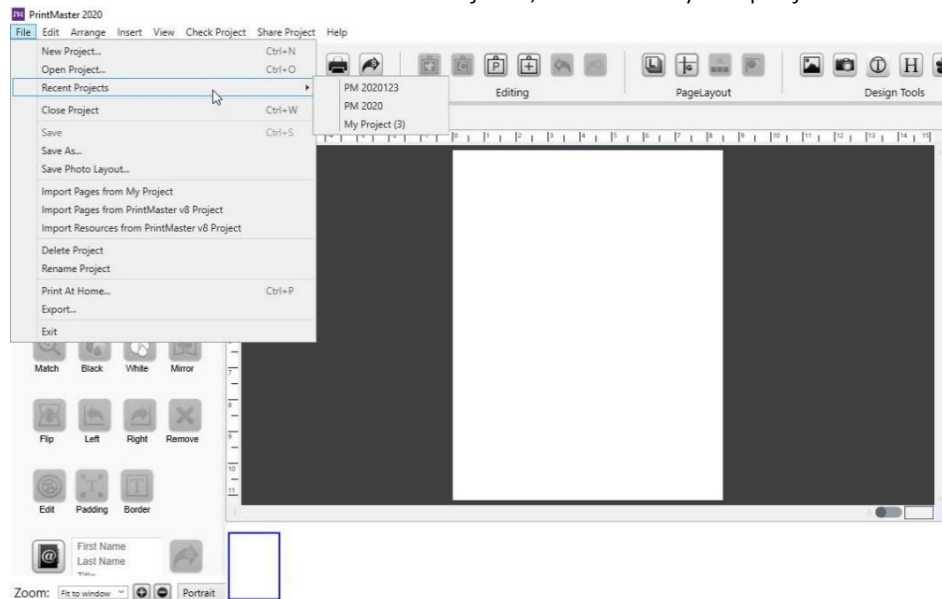


Fig 10.5 (a): Opening a Project

3. Go to the File menu > Open Project, select your project then click open.



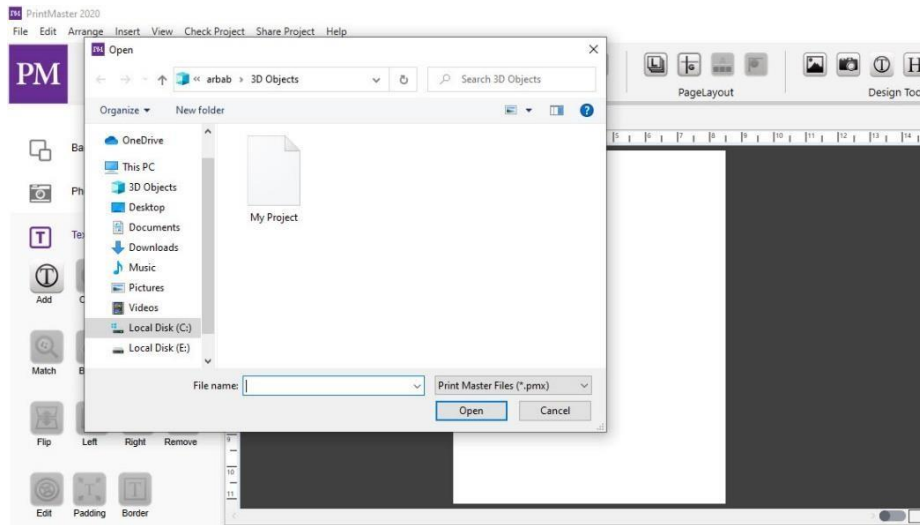


Fig 10.5 (b): Opening a Project

4. Re-open PrintMaster 2020 and click on a Recent project under the creative options.

## 10.6. Project Pages

You can add, import, rearrange, and remove pages from your project.

### 10.6.1. Adding a Page:

1. Go to the Insert menu > Add Page, or click the Add Page icon.
2. In the Add, Page window select a blank page or layout, then click Ok. Fig 10.6.1

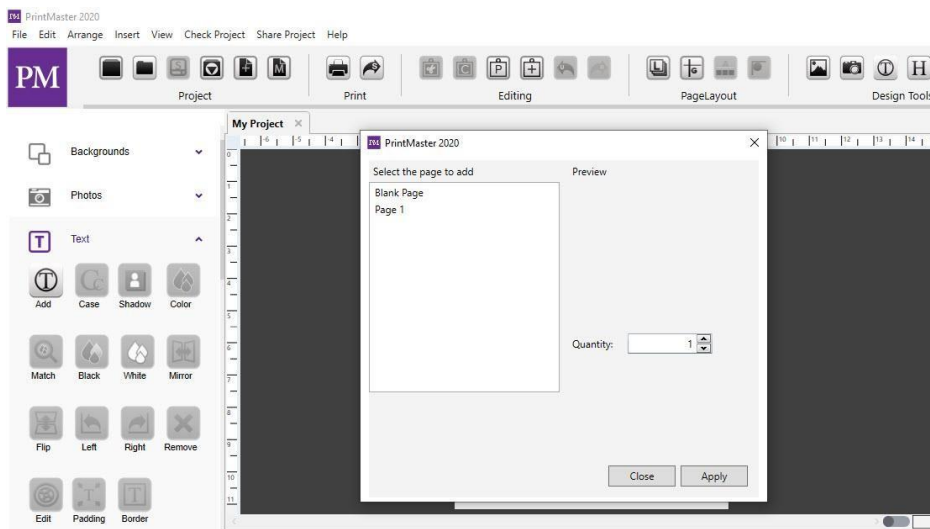


Fig 10.6.1.: Adding a Page



### 10.6.2. Delete a Page:

1. Select the page you wish to remove in your project.
2. Go to the Edit menu > Delete Page.

### 10.6.3. Delete Multiple Pages:

1. Hold the Shift key and select multiple pages thumbnails.
2. Go to the Edit menu > Delete Page. The selected pages will be removed. Page Order

### 10.6.4. To Reorder Pages in a Project:

1. Select a page thumbnail then drag the page right or left and drop it in a new position. Fig 10.6.4
2. As you move the page the other pages will be automatically rearranged and renumber.

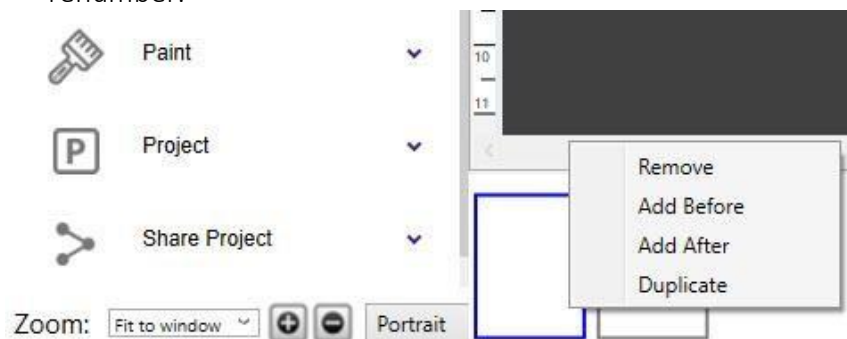


Fig 10.6.4: Rearrange Pages

### 10.6.5. Importing Pages:

1. Import pages from an existing project into the current project.
2. Go to the Insert menu > Import from My Projects.
3. In the new window click on the folder icon at the top right.
4. Open the project you want to import pages from.
5. Select a page from the left column you wish to add click Import. Fig 10.6.5

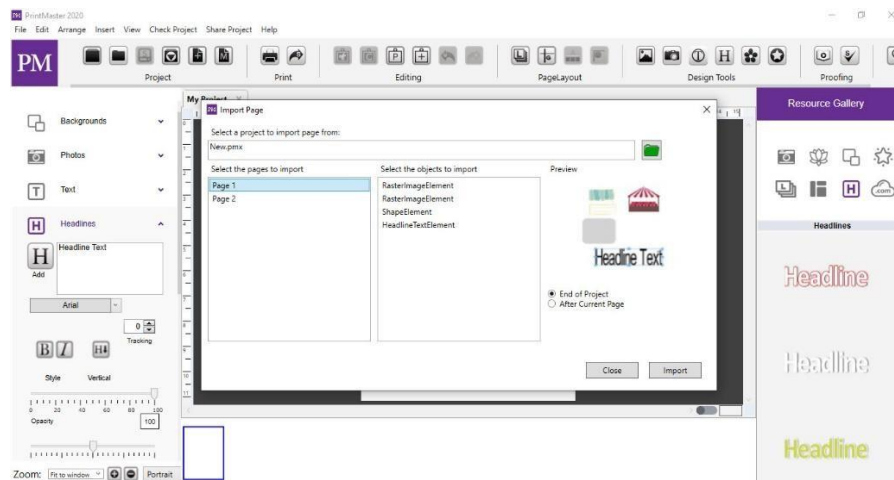


Fig 10.6.5: Importing Pages

6. To select multiple pages in sequence, hold the Shift key while clicking on a page.
7. You may also import objects from other pages using the objects column.
8. When finished importing, click the Close button.

## 10.7. Photo Layouts

1. Layouts are used as a guideline for a quick photo and text placement.
2. Click on the Layout icon in the Resource Gallery (right side).
3. Double-click or drag and drop one of the available layouts to apply it to the page.

Note: Choosing a layout with fewer photos than the current page, will remove photos from the page. Fig 10.7

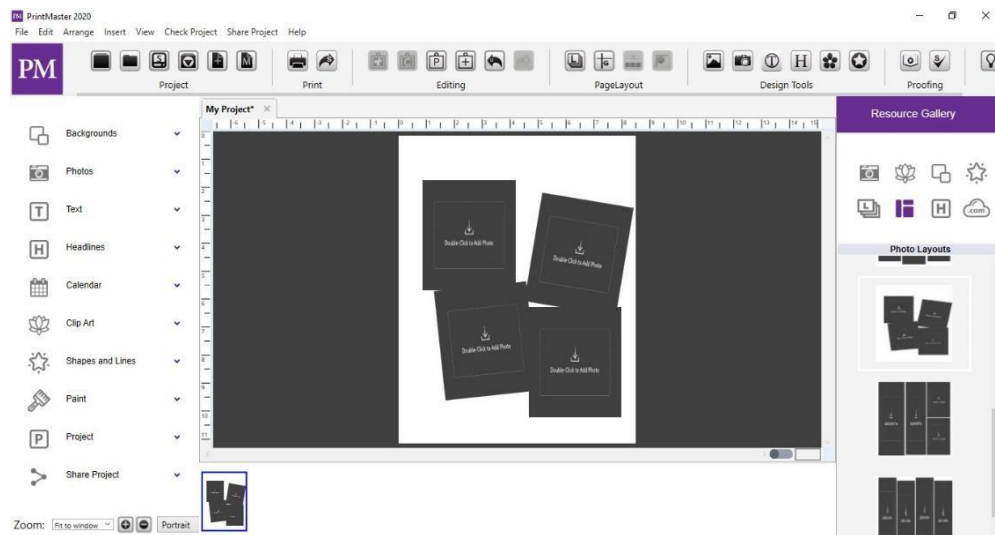


Fig 10.7: Photo Layouts

4. You can save created layouts for later use by going to the File menu > Save Photo Layout.

## 10.8. Working with Page Objects

A Page Object is anything that you place on a page, such as photos, shapes, text, etc.

### 10.8.1. Selecting Objects:

1. Left-click an object to select it.
2. A Light gray box with small square handles will appear at the object's edges.
3. Dragging the corner handles resizes the object proportionally.
4. Dragging side handles will stretch or reduce an individual side.

5. Corner handles are also used to rotate objects when your cursor is a curved arrow.
6. You may select multiple objects by holding the Shift key.
7. You may deselect a single object by clicking on it again while holding Shift.
8. You may select all objects by going to the Arrange menu > Select All.

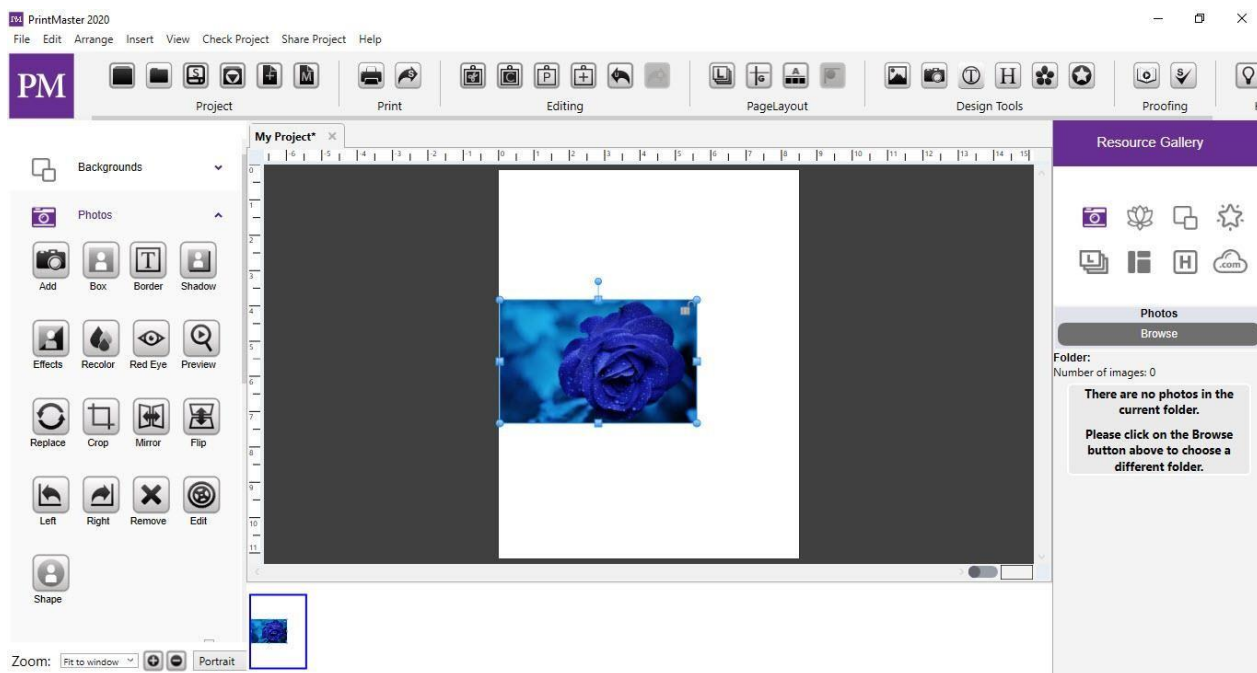


Fig 10.8.1.: Selecting Objects

#### 10.8.2. Moving Objects:

1. Left-click and hold on the selected object.
2. Drag from the center of the object to adjust the position.
3. After you have it positioned let go of the mouse button.
4. Moving multiple objects simultaneously is the same. Hold shift to select multiple objects then drag from the center of a selected object to move them.

#### 10.8.3. Aligning Objects:

1. Rulers - Rulers can be helpful with alignment, positioning, and trim or bleed areas.
2. To enable rulers, go to the View menu > Rulers. (or click on the ruler icon)
3. To adjust the ruler units (inch, cm, pixel) go to Preferences > Ruler.

#### 10.8.4. Page Guides:

1. Page Guides ensure accuracy when aligning objects use page guides.
2. To use Guides, enable Rulers View > Rulers. (or click the Ruler icon)
3. Enable Guides from the View menu > Show Guides. (or click the Guides icon)
4. Position your cursor over the top or side ruler, then left-click to place a guide.

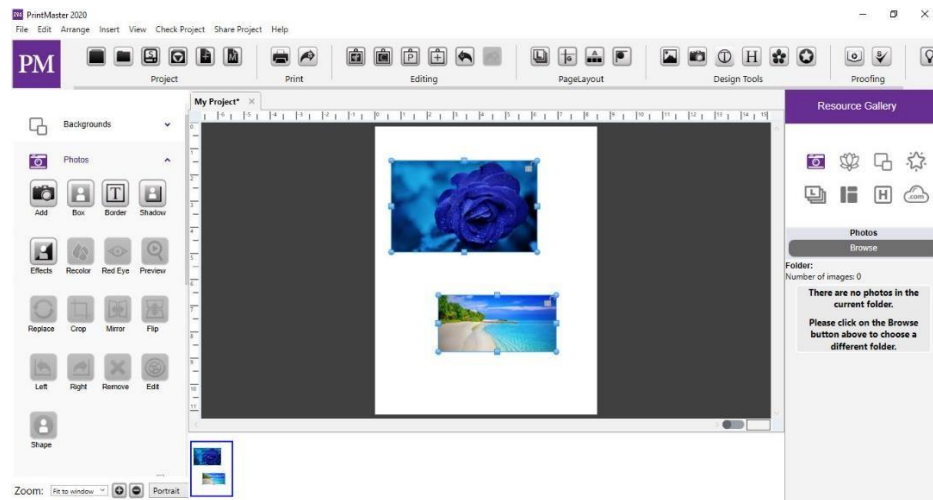


Fig 10.18.4: Page Guides

5. You may also add multiple guides by left-clicking other locations along the ruler.
6. To remove a guide drag it off of the ruler bar, or disable it from View > Show Guides.
7. Snap to Guide aligns the edge of objects with the closest guide when moved. Guides will not appear in the final project output. (print, jpg, etc.)

#### 10.8.5. Align Menu

1. Another way to align objects is with the Align menu item.
2. After selecting one or more objects, go to the Arrange menu > Align.
3. Choose from the list of available alignment options in the drop-down:
4. Top: Aligns all selected objects to the topmost object on the page.
5. Middle: Lines up the vertical middle of each selected object.
6. Bottom: Aligns all selected objects to the bottommost object on the page.
7. Left: Aligns all selected objects to the leftmost object on the page.
8. Center: Lines up the horizontal center of each selected object.
9. Right: Aligns all selected objects to the rightmost object on the page.
10. Center Vertical on Page: Places selected objects in the vertical center of the page.
11. Center Horizontal on Page: Places objects in the horizontal center of the page.
12. Space Evenly: Horizontal: Arranges the currently selected objects so that they all have the same amount of horizontal space between them.
13. Space Evenly: Vertical: Arranges the currently selected objects so that they all have the same amount of vertical space between them.

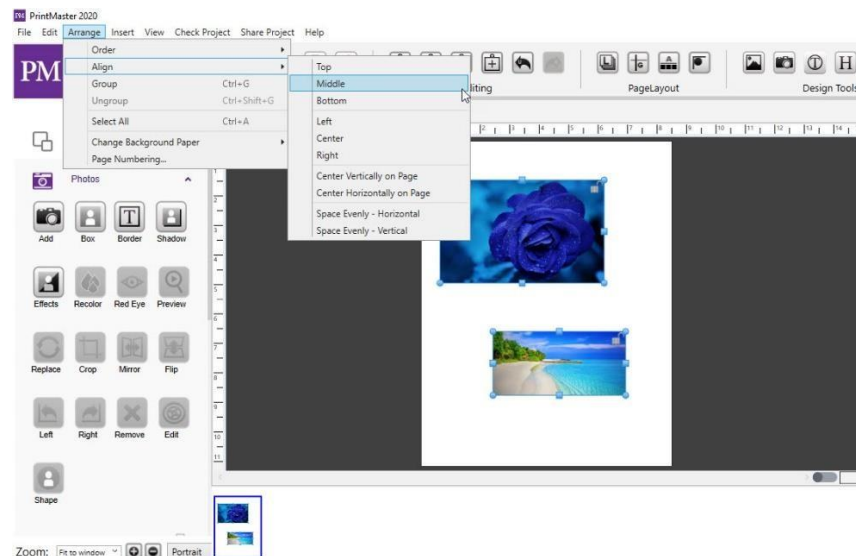


Fig 10.8.5: Align Menu

#### 10.8.6. Grouping Objects:

1. Grouping objects will fix the object's position in relation to grouped objects. This makes it easy to move, rotate, and resize multiple objects at once.
2. To group, objects hold shift and select more than one object on the page.
3. Then go to the Arrange menu > Group.
4. Move, resize, and rotate grouped objects similar to individual objects.

#### 10.8.7. Ungroup Objects:

To ungroup the selected group, go to the Arrange menu > Ungroup.

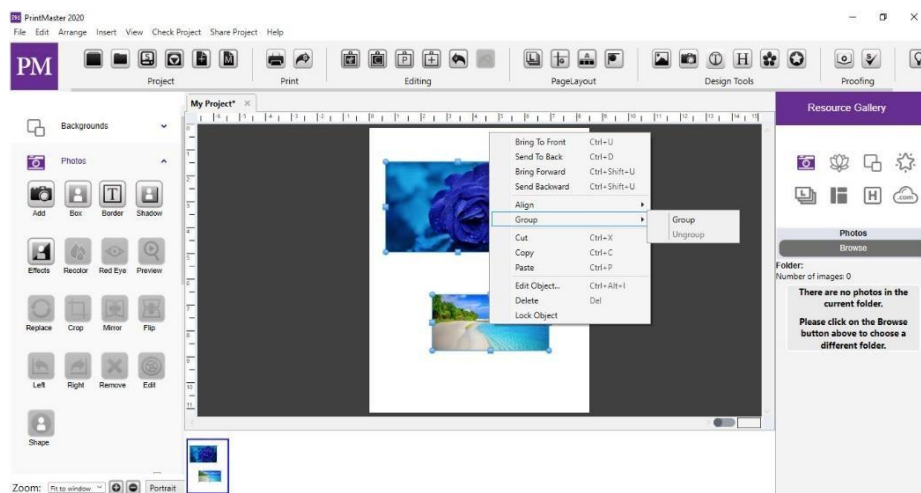


Fig 10.8.7: Ungroup Objects

### 10.8.8. Cut, Copy, and Paste:

Allow you to remove, duplicate, or move objects between pages,

1. Cut:
  - To cut the selected object, go to the Edit menu > Cut. (or. Select the Cut icon)
  - The cut object(s) is now available for pasting anywhere in the project.
2. Copy:
  - To copy the selected object, go to the Edit menu > Copy. (or select the Copy icon)
  - The copied object(s) is now available for pasting anywhere in your project.
3. Paste:
  - After cutting or copying an object, select the page where the object(s) should be pasted.
  - Go to the Edit menu > Paste. (or select the Paste icon)
  - To paste objects without an offset, go to the Edit menu > Paste in Place.

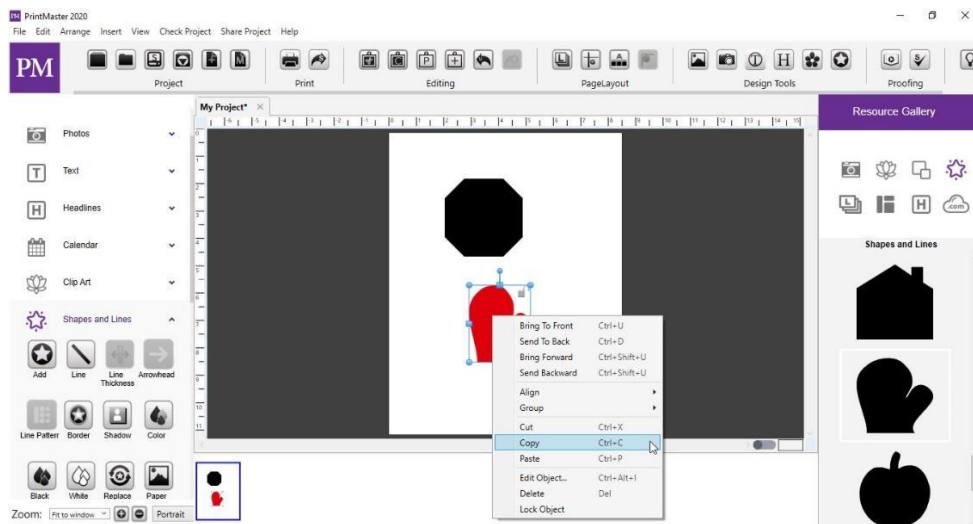


Fig 10.8.8: Cut, Copy and Paste



### 10.8.9. Deleting Objects:

1. Select the object by clicking on it.
2. Do one of the following:
3. Press the Delete key on your keyboard.
4. Go to the Edit menu > Delete.
5. Right-click the object and choose Delete.

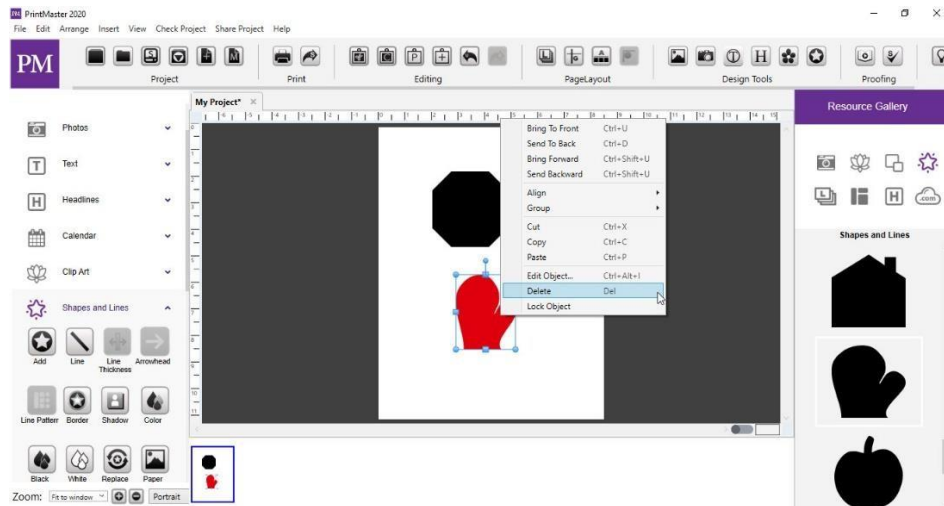


Fig 10.8.9: Deleting Objects

### 10.8.10. Layers:

1. Each object is on its own layer. Layer order determines which objects display on top of other objects.
2. The most recently added object will have a higher layer order and display on top.
3. All objects will display on top of the background image.

To adjust layers:

- a) Select the object to adjust.
- b) Go to the Arrange menu > Order and select the desired action.
- c) Bring to Front – Places the object on top of all other objects.
- d) Send to Back – Places the object behind all other objects.
- e) Bring Forward – Moves the object up one layer.
- f) Send Backward – Pushes the object back one layer.
- g) Right-clicking on an object also allows you to adjust the layer.



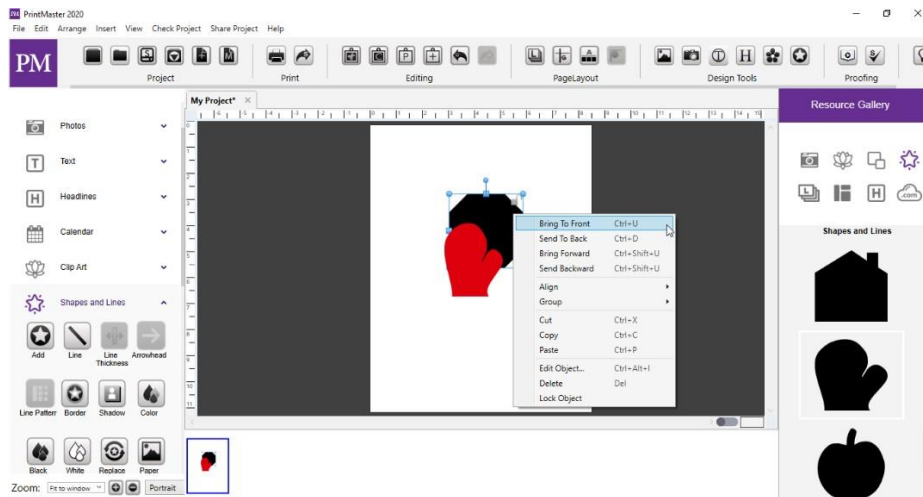


Fig 10.8.10: Layers

### 10.8.11. Layers Gallery

1. Another way to view and sort object layers is by using the Layers gallery.
2. Select the layers icon in the gallery panel.
3. Drag the object up or down in the layers panel to adjust the layer order on the page.
4. You may select an object by double-clicking on an object layer.
5. Right-clicking on an object layer allows you to delete it or bring up edit options.

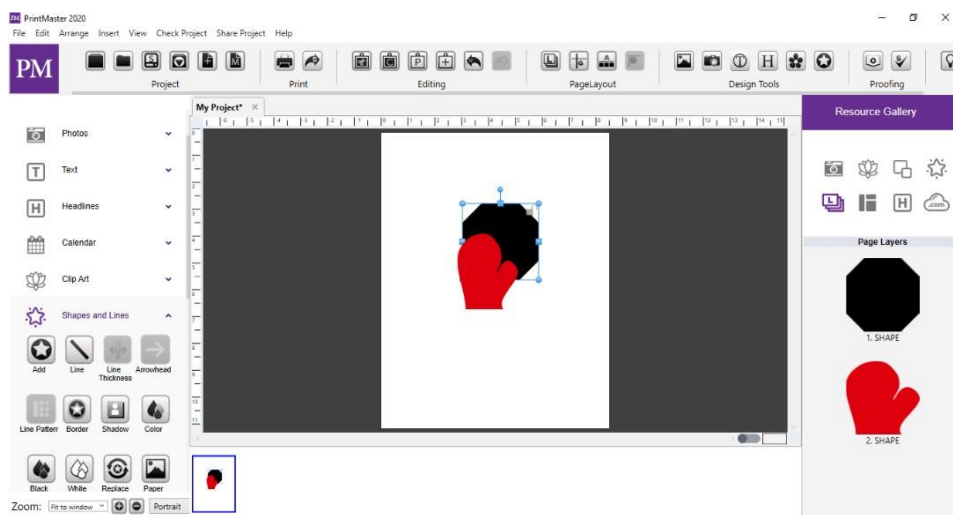


Fig 10.8.11: Layers Gallery

## 10.9. Backgrounds

1. The background serves as the bottom layer of a page. Icon Descriptions.
2. Add: Select a background paper to add your page. Color – Select a color to apply to as your background. Black – Set the background color to black.
3. White: Set the background color to white.
4. Recolor: Recolor the currently applied background image. Effects – Apply an effect to the current background image.
5. Tile: Makes a smaller repeating tile pattern of the current background image.
6. Custom: Select an image file from your computer to use as a background.
7. Mirror: Flip the background horizontally.
8. Flip: Flip the background vertically.
9. Left: Rotate the background image 90 degrees to the left. Right – Rotate the background image 90 degrees to the right.
10. Remove- Deletes the current background.
11. Apply: Applies the current background to all other pages in the project.
12. Opacity: Drag the slider left or right to increase or decrease the background transparency.

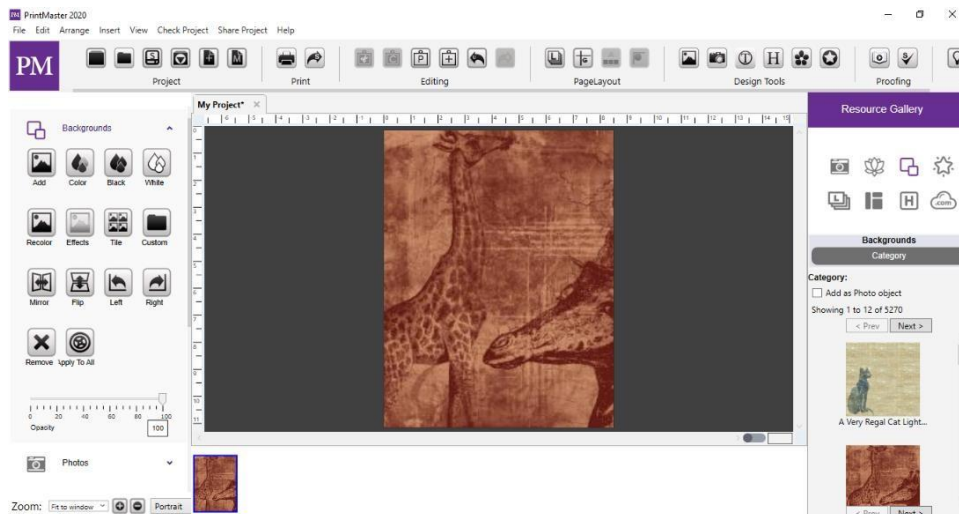


Fig 10.9: Backgrounds

13. You can set the background to be a color, paper, or image.
14. Projects start with a transparent checkered background, if you add objects to your page and export it as a PNG the exported image will only display the page objects added because the background is transparent.
15. If you export your page as JPG or PDF and have not set a background it will default to a white background.

### 10.9.1. Adding Backgrounds

1. Select a page.
2. Open the Backgrounds tab in the Design Tools panel.
3. Click on the Add icon.
4. Choose a paper by selecting a category, then select one of the preview images and click Ok.
5. This will apply the selected background to the current page.
6. Adding a background as a photo object allows you size, position, and layer the background just like a photo.
7. You can also search your desired background by using the search option

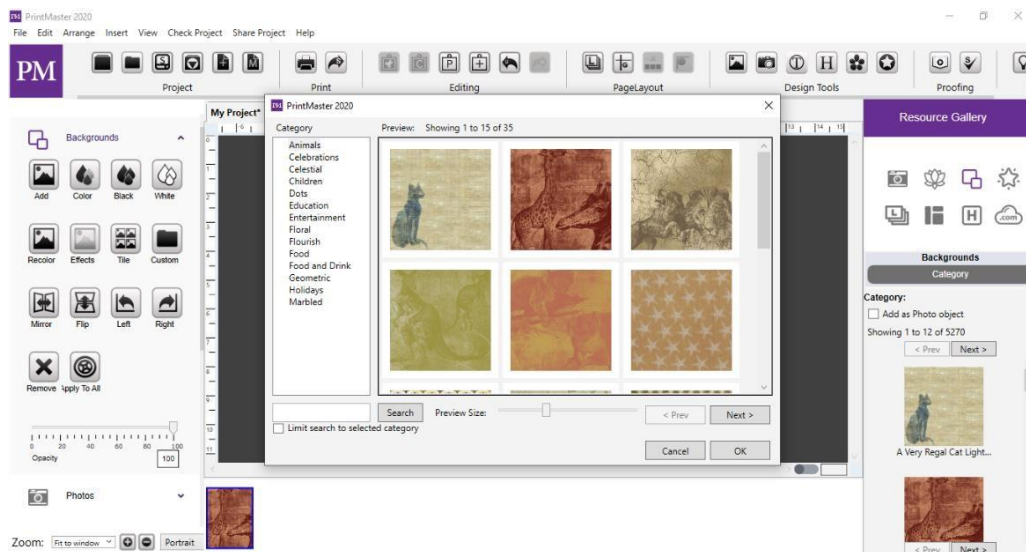


Fig 10.9.1: Adding Backgrounds

### 10.9.2. Adding Custom Backgrounds

1. Select a page.
2. Open the Backgrounds tab in the Design Tools panel.
3. Click on the Custom icon.
4. Select an image from your computer then click Ok.

### 10.9.3. Add a Background Color

1. Select a Page.
2. Open the Backgrounds tab in the Design Tools panel.
3. Click on the Color icon.
4. Use the color palette to select a color, then click Ok.

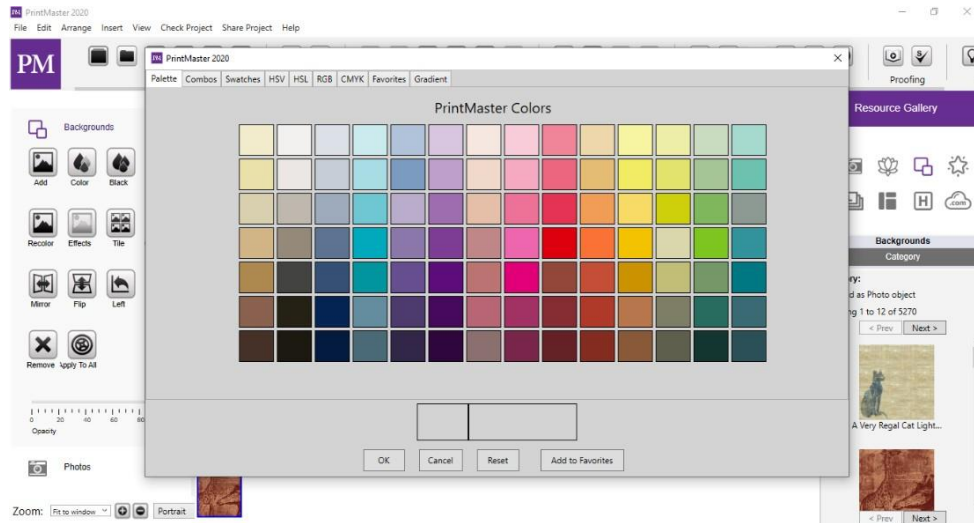


Fig 10.9.3: Adding a Background Color

## 10.10. Photos

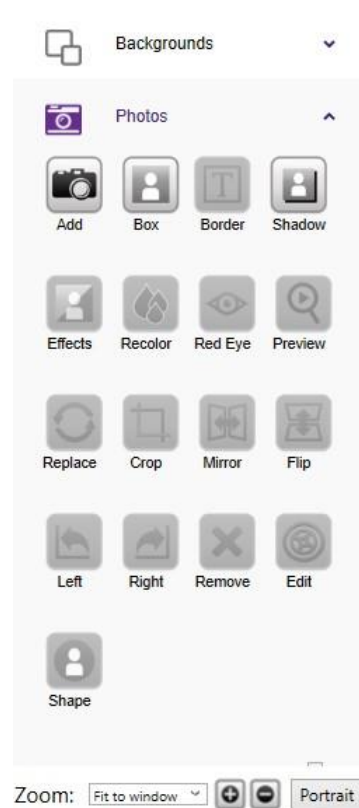


Fig 10.10: Photos

**10.10.1. Icon Descriptions:**

1. Add: Add a selected photo to your page.
2. Box: Add an empty photo box to your page that can be filled with a photo later.
3. Border: Add a border around the selected photo.
4. Shadow: Add a shadow to the selected photo.
5. Effects: Apply effects such as black and white, sepia, etc. to the selected photo.
6. Recolor: Recolor the selected image.
7. Rip: Rip the edge (s) of a selected photo.
8. Shape: Convert the selected image from a box to a shape.
9. Crop: Crop unwanted portions of an image out of the selected photo.
10. Nudge: Slightly move the displayed area of a zoomed or cropped an image.
11. Out: Zoom out the displayed on the selected photo.
12. In: Zoom in on the displayed area of the selected photo.
13. Mirror: Flip the image horizontally on the page.
14. Flip: Flip the image vertically on the page.
15. Left: Rotate the image left 90 degrees.
16. Right: Rotate the image right 90 degrees.
17. Remove: Deletes the photo from the page.
18. Edit: Displays photo info and allows you to adjust the photo size and position.
19. Red: Remove redeye from a selected photo.
20. Replace: Swap the selected image with a different photo.
21. Opacity: Drag the slider left or right to increase or reduce the photo's transparency.
22. Rotation: Drag the slider left or right to apply a rotation.

**10.10.2. Photo Recommendations:**

1. Format: JPG or PDF.
2. Resolution: Roughly 300DPI (dots per inch) or higher recommended for printing.
3. Ratio: 4x4 inches (1200x1200 pixels) or larger for printing.
4. Background or full: Page images should be 12x12 (3600x3600) or larger.
5. File Size: Roughly 10MB or less in file size. Larger file sizes can have trouble rendering.
6. Color Mode: RGB, (red, green, blue).
7. Clip Art: Save as JPG, and add as custom Clip Art to preserve transparency.

**10.10.3. Adding Photos:**

1. There are multiple methods for adding a photo to a page: Add Icon.
2. Select a page.
3. Open the Photos tab.
4. Click on the Add icon.

5. Select an image from your computer and click Ok.

#### 10.10.4. Gallery:

1. Select a page.
2. Select the Photo icon in the Resource Gallery.
3. Double: click or drag and drop an image from the gallery list onto your page.

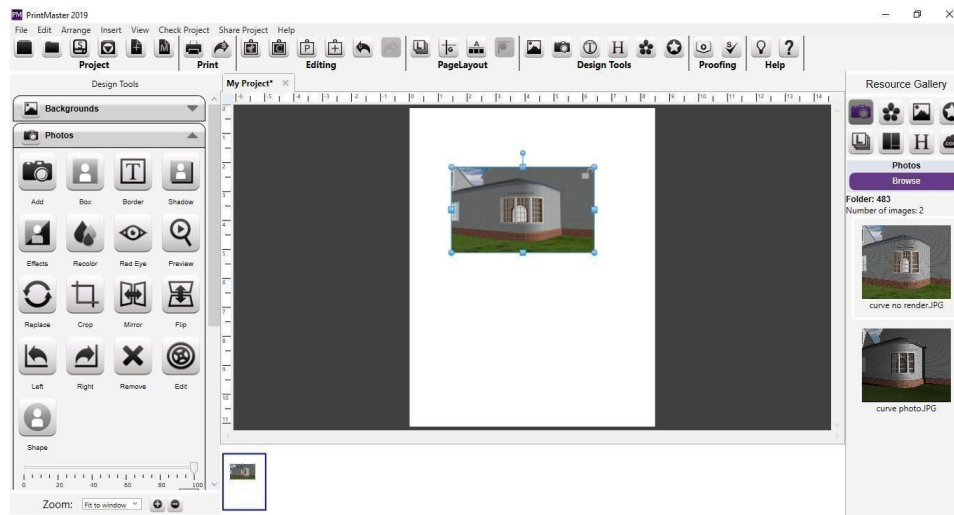


Fig 10.10.4: Gallery

#### 10.10.5. Photo Box:

1. Add or use an existing photo box on the page.
2. Double: click on the empty box.
3. Select an image from your computer and click Ok.
4. Drag and Drop: You can drop images onto your page from a folder on your computer.
5. Copy and Paste: You may copy and paste image files onto your page as well.
6. Photo Tiling: Allows you to fill multiple photo boxes with a single image.
7. Open the Photos tab under Design Tools.
8. Click on the Add Photo Box icon to place an empty box on your page.
9. Repeat this process, size, and position multiple boxes throughout the page.
10. While holding the shift key, select multiple boxes with a left-click.
11. Once all the boxes are selected go to the Arrange menu > Group.
12. Open the photos tab in the Resource Gallery.
13. Drag and drop an image from the gallery onto the grouped boxes
14. The image will fill the space of the grouped boxes leaving space between boxes.



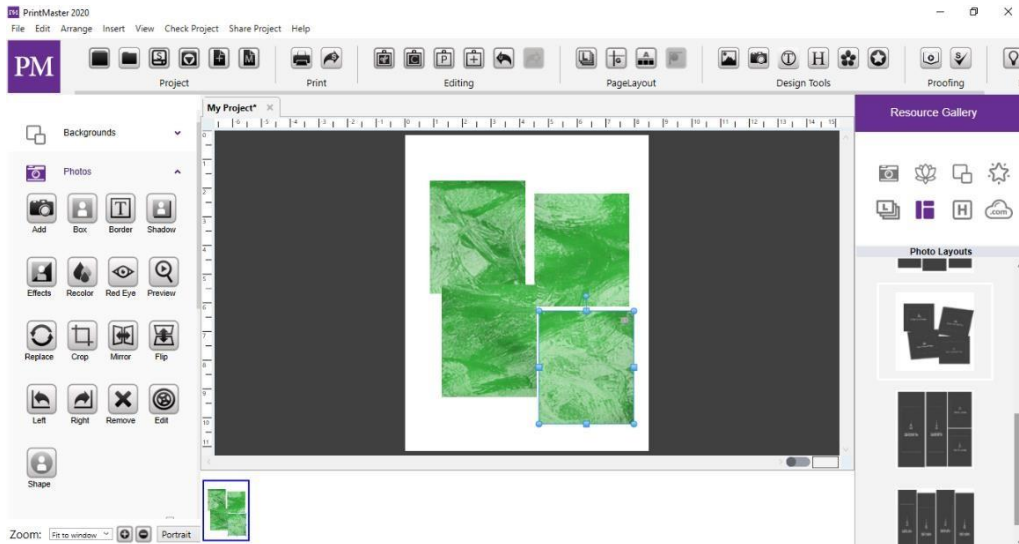


Fig 10.10.5.: Photo Box

### 10.10.6. Borders:

1. You may add a border or frame around a photo.
2. Select a photo and click on the border icon to display the border dialog.
3. Drag the Size slider to change the size of the border. (pixels) ☐ Click Change to choose a color for the border.
4. Toggle the checkboxes to apply the border settings to all photos on the page or project.
5. Click OK to apply.

### 10.10.7. Shadows:

1. Add a shadow to a photo to give it depth and make it stand out on the page.
2. Select a photo and click on the shadow icon to display the shadow dialog.

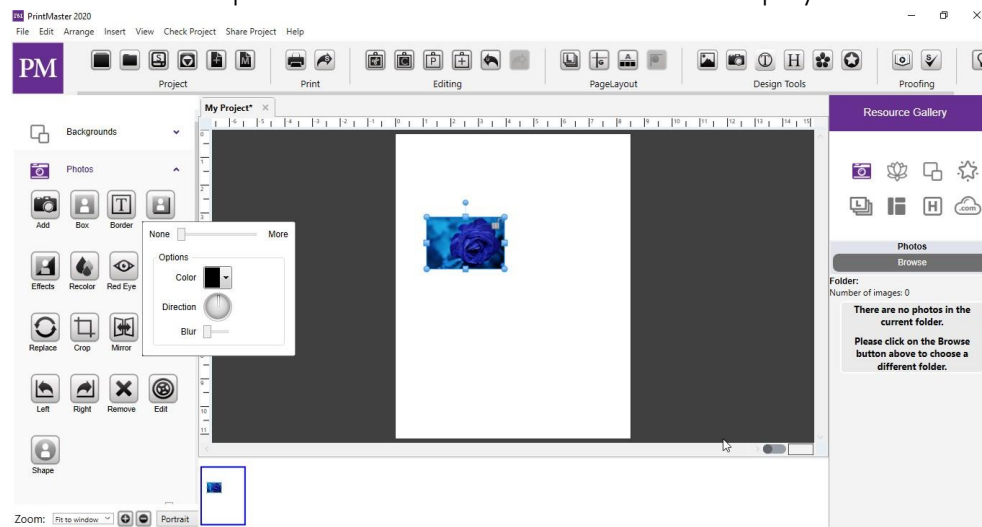


Fig 10.10.7(a) - Shadows



3. Use the Opacity slider to affect how dark or light the shadow is.
4. Use the Blur slider to increase or decrease the sharpness of the shadow's edge.
5. Click Change to choose the shadow's color.
6. Use the arrow keys to adjust the shadow position or drag the shadow in the preview.
7. Toggle the checkboxes to apply the shadow settings to all images.
8. Reset to Default will clear the current settings.
9. Save as Default will save the current settings as the default.
10. Click OK to apply the shadow to the selected photo.
11. Crop: Allows you to display the desired section of a photo.
12. With a photo selected, click on the Crop icon.
13. If the photo is already cropped, it will show the current crop area.
14. If the photo does not have a currently defined crop area, position your cursor in the preview area, then left: click and drag a selection box to define the crop area.
15. Drag from the small grey box handles to adjust the size of the crop area.
16. To start over, or to display the entire photo, click the Clear Crop button.
17. When you are satisfied with your crop area selection, click on the OK button.
18. The grayed areas of the photo will not be shown on the page.

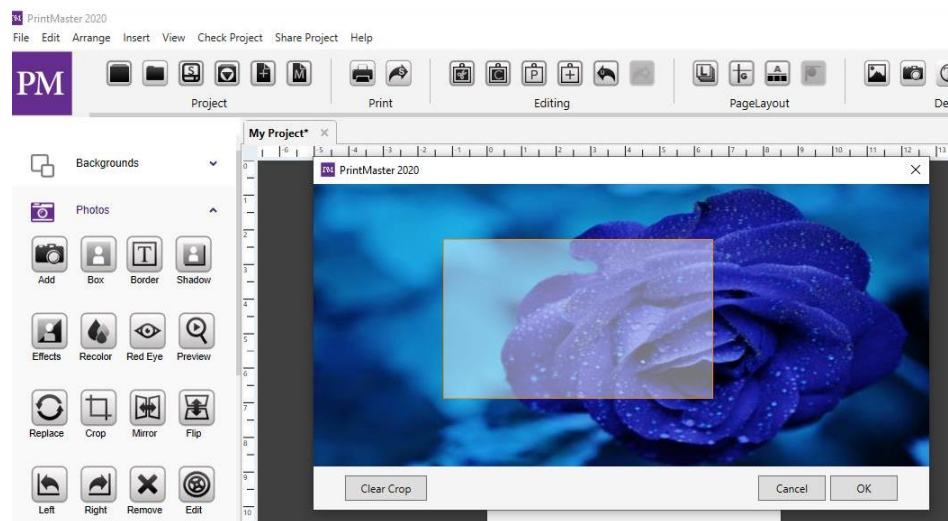


Fig 10.10.7 (b): Shadows

### 10.10.8. Nudge:

This tool allows you to adjust the position of the photo within the crop area without reopening the Crop Photo window. Click on an arrow to nudge the photo in the direction of the arrow.

Note: This tool will have no effect if the photo is not cropped.

### 10.10.9. Remove Red Eye:

Red Eye causes the irises of a person's eye to appear red in a photo.

With a photo selected, click on the Remove Red Eye icon.

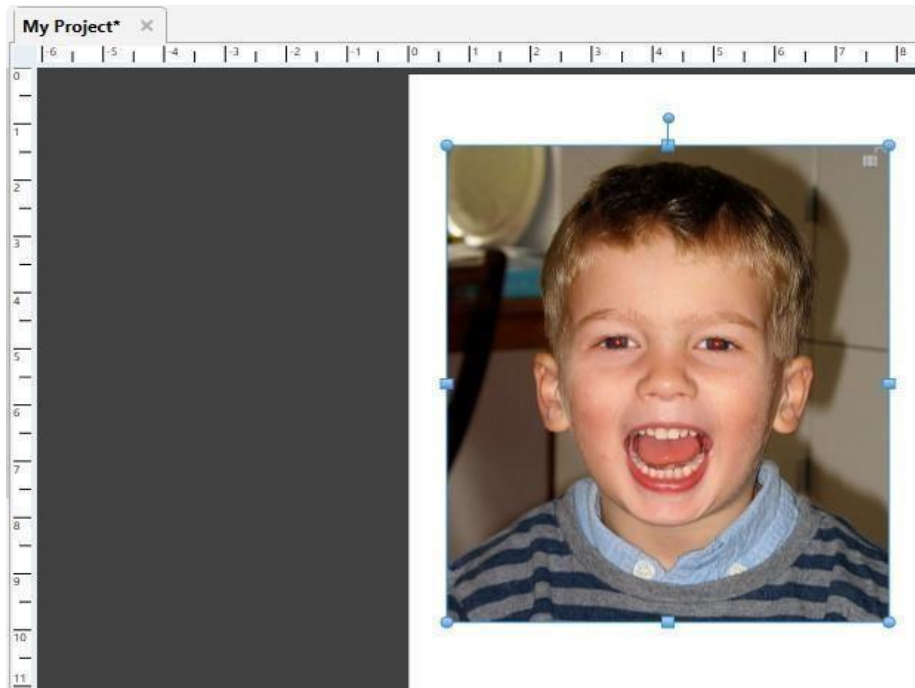


Fig 10.10.9 (a): Remove Red Eye

Drag a rectangle over the affected area.



Fig 10.10.9 (b): Remove Red Eye

1. A light gray rectangle will indicate the area you have selected
2. Increase the Red Sensitivity slider to replace more shades of red.
3. Round Shape Filter box will limit red replacement to circular areas.
4. Reset Photo returns the photo to its original state (before any red-eye reduction).
5. After choosing your settings, click on the Remove Red button.



Fig 10.10.9 (c): Remove Red Eye

### 10.10.10. Photo Effects:

Allow you to apply different effects to a selected photo.

1. Black & White: Transforms a color photo into a black and white photo.
2. Sepia: Applies a brown and white coloration to the photo.
3. Blue: Applies blue coloration to the photo.
4. Red: Applies red coloration to the photo.
5. Brighten: Brightens the image.
6. Darken: Darken the image.
7. Mirror: Flip the photo around horizontally.
8. Flip: Flip the photo vertically.
9. Blur: Softens the focus, reducing the definition of the photo.
10. Sharpen - Increases the focus, or definition, of the photo.
11. Negative: Reverses the colors in a photo, as if viewing a film/photo negative.
12. Gamma Correction: Changes the brightness values of the gray tones without dramatically altering the shadows and highlights.
13. Emboss: Makes the photo look like foil has been placed over the photo, sculpted to the photo's contours, and then colorized.
14. Sketch: Simulates a pencil drawing of the photo.
15. Impressionist Painting: Gives the photo an artistic, brushed look.
16. Fish Eye: Distorts photos to make the middle portion of the photo appear larger.
17. Effect Amount: Drag the slider left or right to apply more or less of the effect

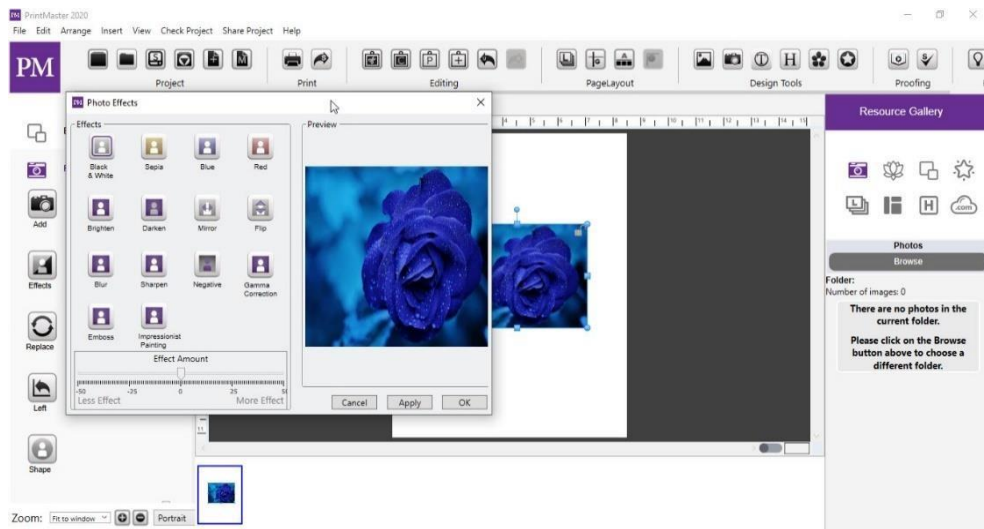


Fig 10.10.10: Photo Effects

### 10.10.11. Photo Edit:

It allows you to make adjustments to the size and location of the photo. Fig 10.10.11

1. Enter a number or click on the arrows to adjust the settings in each field.
2. X – Changes the horizontal position of the selected object.
3. Y – Changes the vertical position of the selected object.
4. W (Width) – Changes the width of the selected object.
5. H (Height) – Changes the height of the selected object.
6. Keep Proportions automatically adjust the height as you change the width or height to keep the photo from becoming distorted.

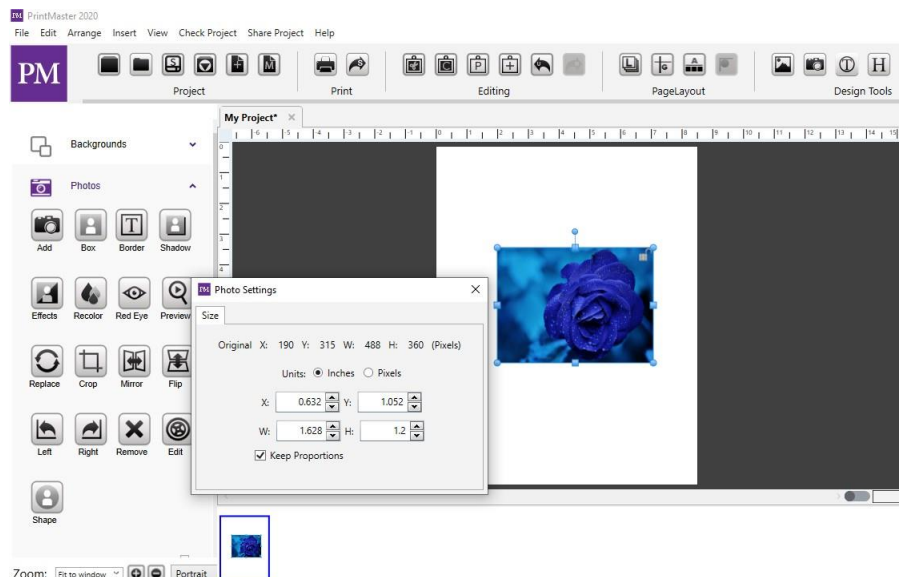


Fig 10.10.11. Photo Edit

## 10.11. Text

The text allows you to add captions, and information on your page. Icon Descriptions.

1. Add – Adds a text box to your page.
2. Case – Updates case on a selected text box. (UPPER, lower, Title, Sentence.)
3. Curve – Curve your text around or inside a square or circle shape.
4. Shadow – Adds a shadow to the selected text to give it depth.
5. Color – Sets a desired color for the selected text.
6. Match – Match the color of other elements on the page.
7. Black – Changes the selected text color to black.
8. White – Changes the selected text color to white.
9. Mirror – Flips the text horizontally. Flip – Flips the text vertically.
10. Left – Rotates the text left 90 degrees.
11. Right – Rotates the text right 90 degrees.
12. Remove – Deletes the selected text box from the page.
13. Edit – Enter and exit the typing mode, so that you can enter new text, or adjust the position.
14. Padding – Increase or decrease the distance text is placed from the edge of the box.
15. Border – Add a border around the selected text box.
16. Address – Brings up your address book contact list.
17. Field – Select a specific field from your address book.
18. Insert – Allows you to insert the selected field into a text box.
19. Font – Loads a drop-down menu of available fonts.
20. Size – Set the desired size of the selected text from the drop-down menu.
21. Spacing – Adjust the space between lines. (1 – 3)
22. Tracking – Adjust the space between individual letters.
23. Horizontal Alignment – Set text justification to Left, Center, Right, or Full.
24. Vertical Alignment – Set text justification to Top, Middle, or Bottom.
25. Style – Select B (Bold), U (Underline), I (Italicize), or (Bullet) to apply the style.
26. Opacity – Drag the slider left or right to increase or reduce the transparency.
27. Rotation – Drag the slider left or right to apply a rotation.

### 10.11.1. Adding Text:

1. To add text, open the Text tab under design tools, and click on the Add icon.
2. A text box will appear in the middle of the page.
3. Type your text in the text box.
4. Use the options in the text panel to change the size, font, or style of highlight text.
5. Drag from the handles (small grey boxes) on the edge of the box to adjust its size.
6. De-select the box, then drag from the center of the box to adjust the position.



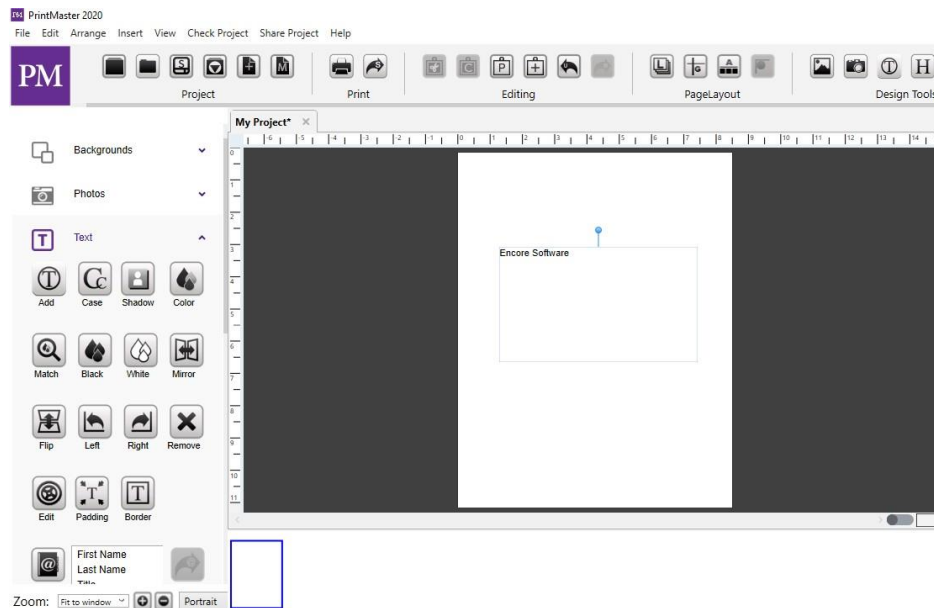


Fig 10.11.1: Adding Text

### 10.11.2. Edit Text:

1. To enter edit mode (allows typing) double-click on the text box.
2. To exit edit mode (allows positioning) de-select the box by clicking off the page.
3. You can also change the size, underline, bold or italic a single alphabet in the whole word or line in Text-box

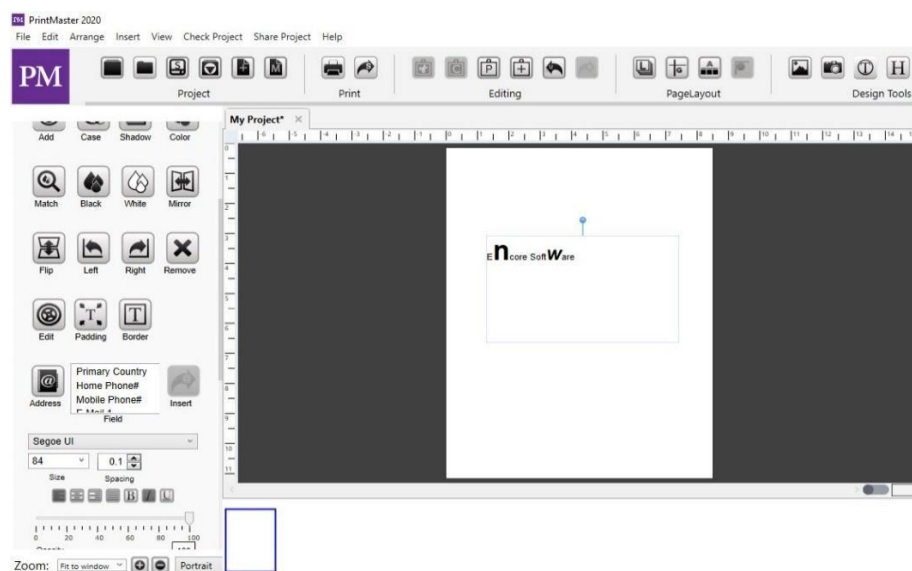


Fig 10.11.2: Edit Text

### 10.11.3. Text Font:

1. Set All Project Text Fonts - Apply fonts and styles to all text boxes in a project.
2. Go to the Edit menu > Text Options > Set All Project Text Fonts.
3. In the Text Style Editor, dialog select your new font, size, style & color.

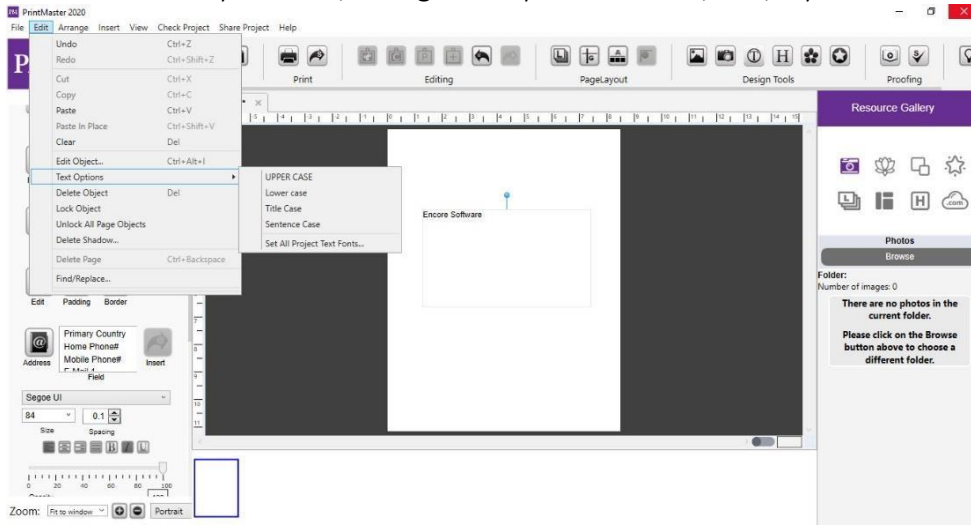


Fig 10.11.3: Text Font

### 10.11.4. Save Text:

Click Ok to apply the change to all text within your project.

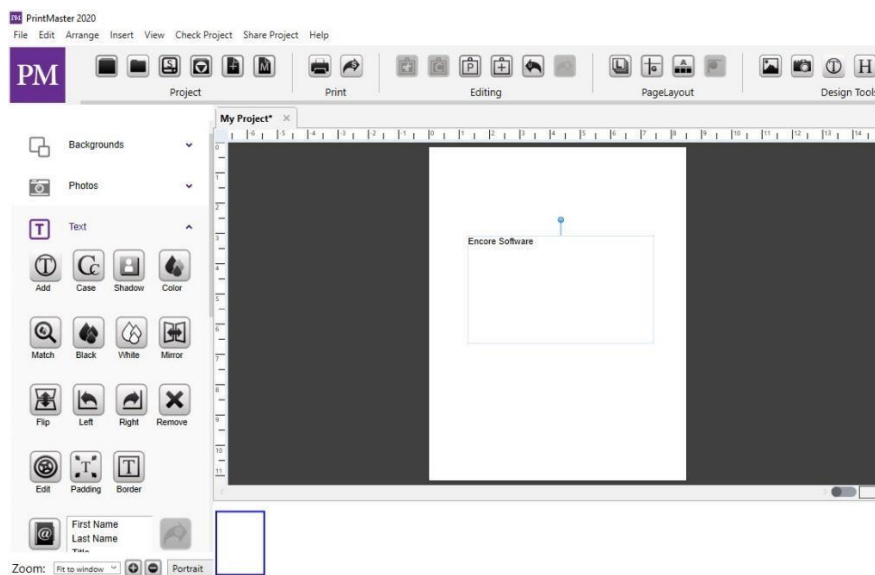




Fig 10.11.4: Save Text

### 10.11.5. Text Case Tools:

1. Change text to UPPER, lower, Sentence, or Title case.
2. Select a text box, then go to the Edit menu > Text Options.

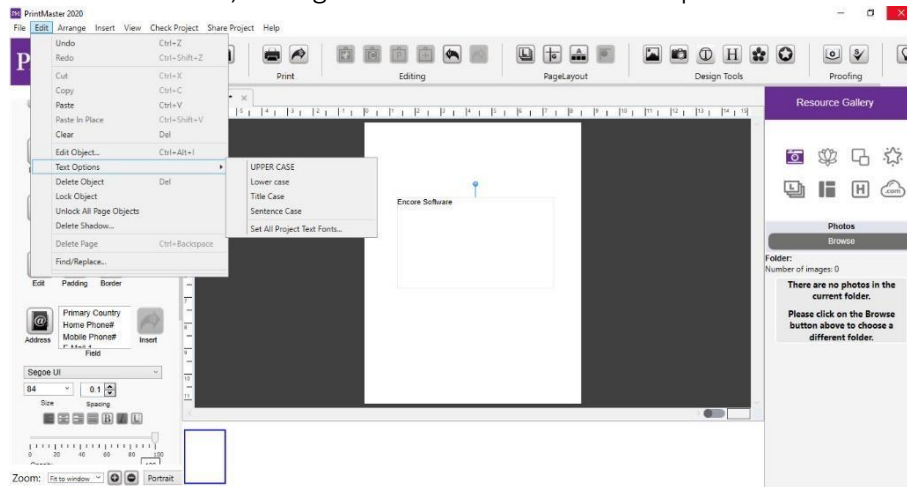


Fig 10.11.5: Text Case Tools

### 10.11.6. Font Types:

1. Recently Used Fonts and Type to Select Fonts
2. The font drops down menu supports 5 recent fonts that will automatically appear at the top of the list as you apply different fonts to Text objects.
3. You can also click the drop-down and start typing the name of the font, the menu with a jump to the font with the same name, this saves time instead of having to manually scroll large font lists.

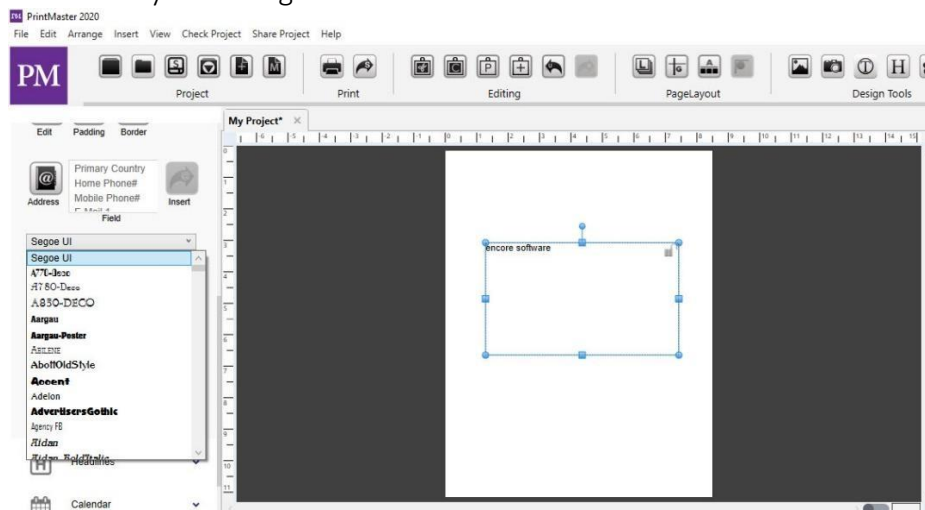


Fig 10.11.6: Font Types

## 10.12. Address Book and Mail Merge

To use the Address Book and Mail Merge feature in PrintMaster 2020 you can create a contact list from scratch or import an existing contact list in .csv file format.

To create an Address Book from scratch, follow these steps.

1. Select the project type you wish to personalize with names or addresses
2. In the left- hand Design Tools navigation select Text
3. From the Text tools option select Address
4. You should now see the Address Book. Select Add to create a New Contact
5. Fill out the New Contact details and select Save.
6. To create another contact select Add again.
7. To change a contact select Edit, to delete a contact select Delete.

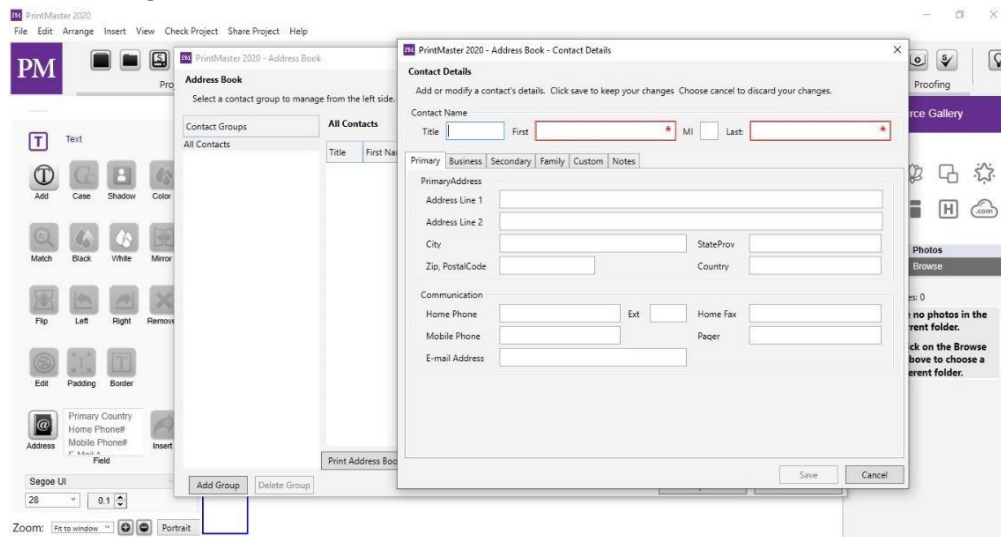


Fig 10.12: Address Book and Mail Merge

### 10.12.1. Import an Address Book

1. To import an Address Book from an existing .csv file format follow these steps.
2. Select the project type you wish to personalize with names or addresses
3. In the left-hand Design Tools navigation select Text
4. From the Text tools option select Address
5. You should now see the Address Book. Select Import to import your contacts

6. Select Browse to find the .csv file you would like to import
7. Open the .csv file and you will see the Import Contacts dialogue
8. If your .csv file contains a Header Row with names or other data designations you can have that row removed from the import process by changing the Header Rows field
9. Next, you must assign each of the columns a name. On the right side, you can assign each column to a matching address book field by using the pull-down menu option under the Name column.
10. Assign each column you wish to import into PrintMaster 2020 a name and select Import.

#### **10.12.2. Add Contact Details:**

1. To place contact details into a project, follow these steps:
2. In the left- hand Design Tools navigation select Text
3. From the Text tools option select Address
4. You should now see the Address Book
5. From the Address Book select the Contacts that you would like to include in your project
6. Next, add a text box to the project by selecting the Add option from the Text tools option
7. To add a name and address from your Address Book select the First Name from the Field next to the Address button.
8. With the text cursor in the text box where you want to place the First Name, select the Insert button. Continue this process to add the Last Name, Address 1 and remaining address fields.
9. You may need to increase the font size to make it easier to read. Select the Size
10. Option under the font name and choose a larger font size.

#### **10.12.3. Print Preview**

1. Print Preview your project to make sure all of the Fields are properly displayed by selecting the File / Print at Home option and Preview.
2. When asked to apply mail merge contacts to your document select Yes

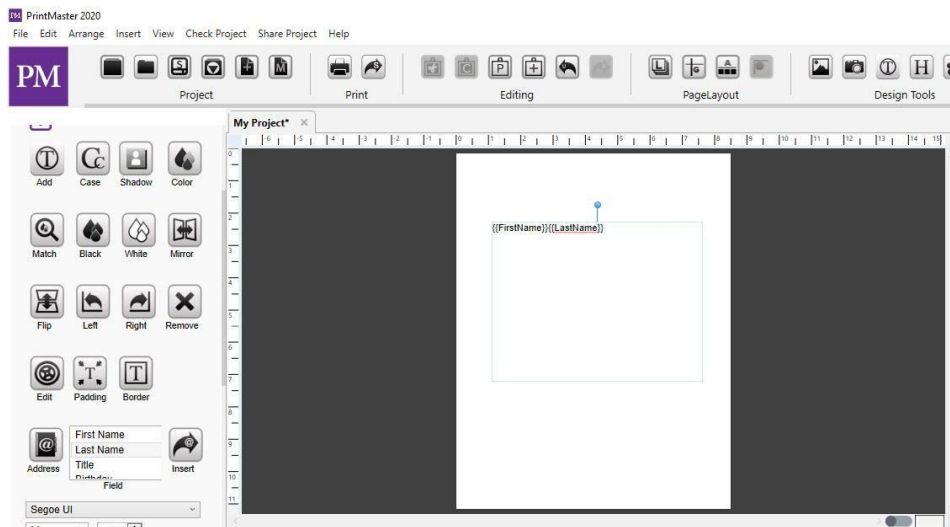


Fig 10.12.3. Address Book and Mail Merge

## 10.13. Headlines

Headlines allow you to customize text further with image fill, stroke, shadows, etc. Icon Descriptions.

1. Add – Adds a headline box to your page.
2. Font – Loads a drop-down menu of available fonts.
3. Size – Set the desired size of the selected headline from the drop-down menu.
4. Spacing – Adjust the space between lines. (1 – 3)
5. Tracking – Adjust the space between individual letters. Style – Select B (Bold) or I (Italicize) to apply the style.
6. Opacity – Drag the slider left or right to increase or reduce the transparency.
7. Rotation – Drag the slider left or right to apply a rotation.

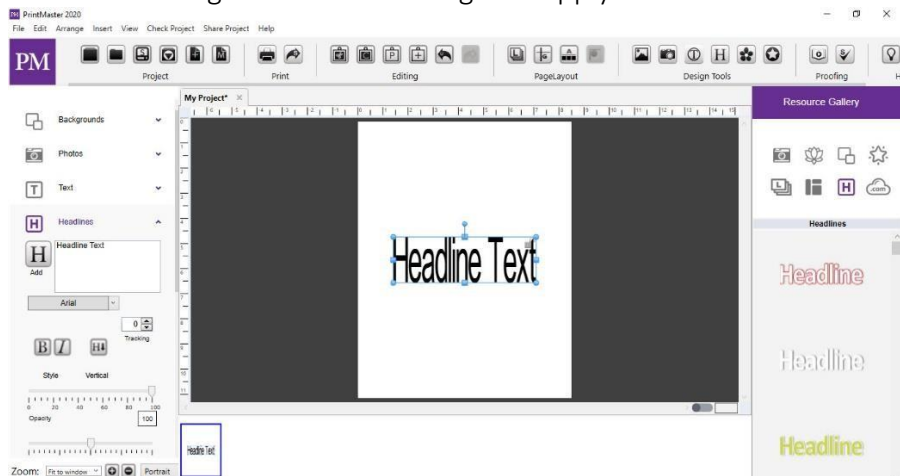


Fig 10.13: Headlines

### 10.13.1. Adding Headlines

1. To add a headline to a page, open the Headlines tab and click on the Add icon.
2. A headline box will appear in the middle of the page.
3. Type your headline, the headline box will update with what is typed.
4. Drag from the center of the box to adjust the position.
5. Drag from the handles (small grey boxes) to adjust the size of the box.
6. Please note that the text will stretch to fit the headline box and will adjust the font size. To enter edit mode (allows typing) double-click on the headline box.
7. You may size and position headlines on the page while in edit mode.

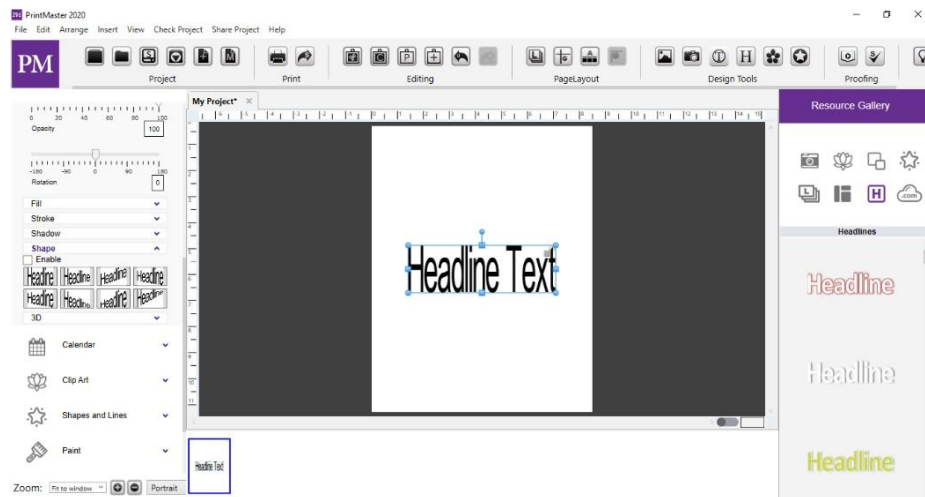


Fig 10.13.1: Adding Headlines

### 10.13.2. Fill Tab

1. Fill the characters in a headline: Color, Gradient, Image, and Texture.
2. Toggle the Enable checkbox to apply or clear the fill.
3. Select an option from the File Type drop-down.
4. Solid Color – Click on the Change Color square to select a color for the fill.
5. Gradient Color- Click on the Gradient Color square to change the gradient settings.
6. Image – Click on the Change icon to choose an image file to fill the headline.
7. Double-click on the headline to adjust the image's position in the headline.
8. Texture – Click on one of the Texture Options to fill the headline with that texture. Drag the Fill Opacity slider to increase or decrease the transparency of the fill.

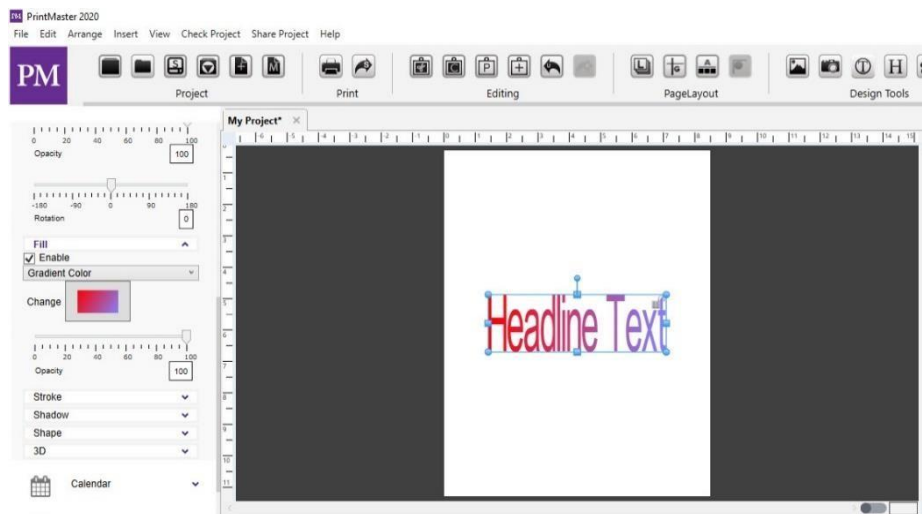


Fig 10.13.2: Fill Tab

### 10.13.3. Stroke Tab

1. A stroke is a colored border around the headline.
2. Toggle the Enable checkbox to apply or clear the stroke. Select an option from the Stroke Style drop-down.
3. Solid Color – Click on the Change Color square to select a color for the stroke.
4. Gradient Color- Click on the Gradient Color square to change the gradient settings.
5. Neon – Click on the Edge Color icon to change the color of the outside of the glow. Click on the Center Color icon to change the color of the middle.
6. Glow – Click on the Glow Color icon to change the color of the glow effect.
  - a. Drag the Stroke Width slider to increase or decrease the thickness of the stroke.
  - b. Drag the Stroke Opacity slider to increase or decrease the transparency of the stroke.

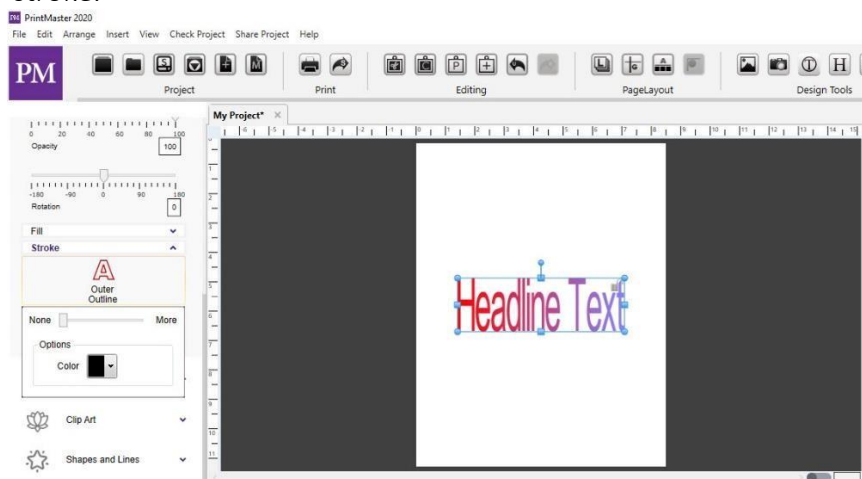




Fig 10.13.3: Stroke Tab

### 10.13.4. Shadow Tab

1. Toggle the Enable checkbox to apply or clear the shadow.
2. Click on the Shadow Color button to choose the shadow's color.
3. The pixel offset values (X and Y) values determine how far the shadow stretches from the headline, and to which direction. Enter a value or use the arrows to adjust the offset.
4. Use the Shadow Blur slider to increase or decrease the sharpness of the shadow's edge. Drag the Shadow Opacity slider to increase or decrease the shadow transparency.

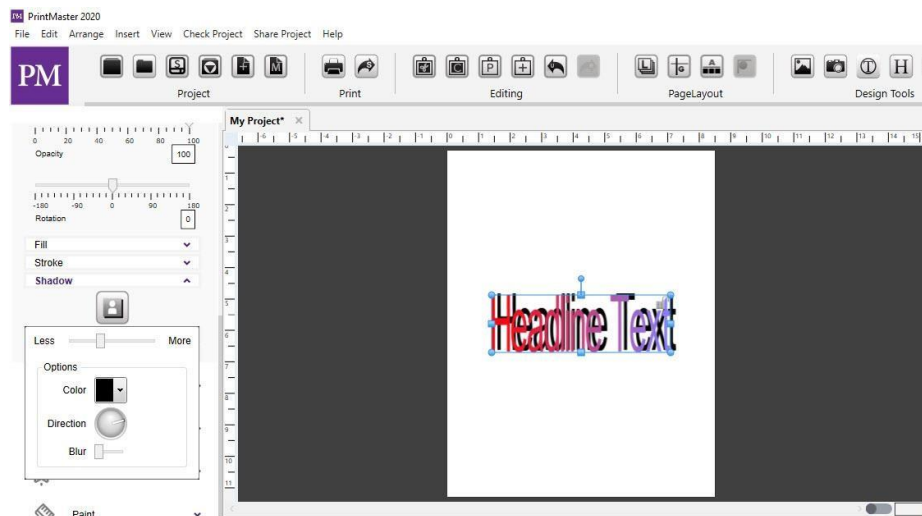


Fig 10.13.4.: Shadow Tab

### 10.13.5. Shape Tab

1. The Shape Options allow you to bend the headline to the shape of your choosing.
2. Toggle the Enable checkbox to apply or clear the shape.
3. Select Shape Type - Depending on your selection, you may see the options below.
4. Arc Options – Drag the Angle slider to intensify the curve of the arc or flatten it out.
5. Shear Options – Drag the X Magnitude slider to set the horizontal slant of the shear. Drag the Y Magnitude slider to set the vertical slant of the shear.
6. Wave Options – Drag the slider to increase or decrease the wave effect.



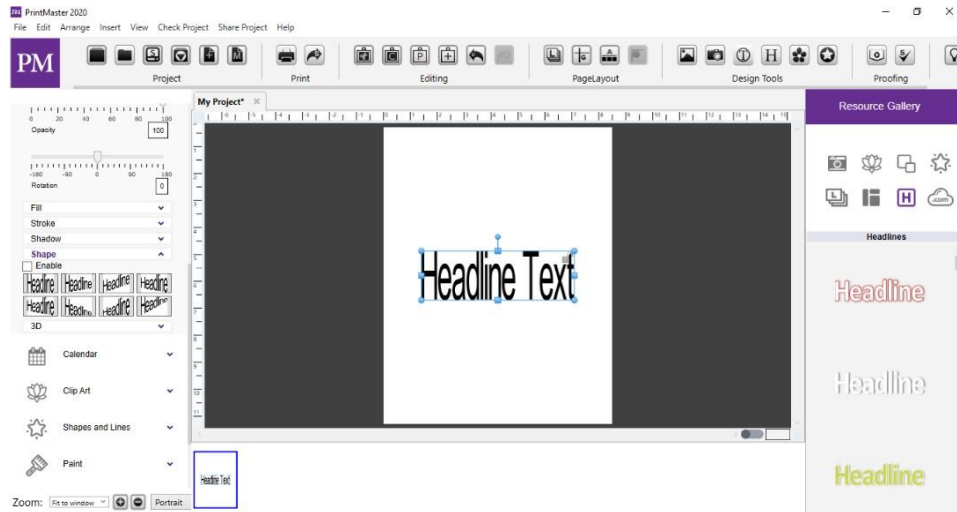


Fig 10.13.5.: Shape Tab

### 10.13.6. 3D Tab

1. The 3D effects give the headline the appearance of thickness or depth. Toggle the Enable checkbox to apply or clear the 3D settings.
2. Click on the Change Edge Color button to choose the effect's color.
3. Drag the Horizontal and Vertical sliders to determine the amount of the 3D effect.
4. Horizontal will increase or decrease the horizontal thickness of the 3D edge.
5. Vertical will increase or decrease the vertical thickness of the 3D edge.

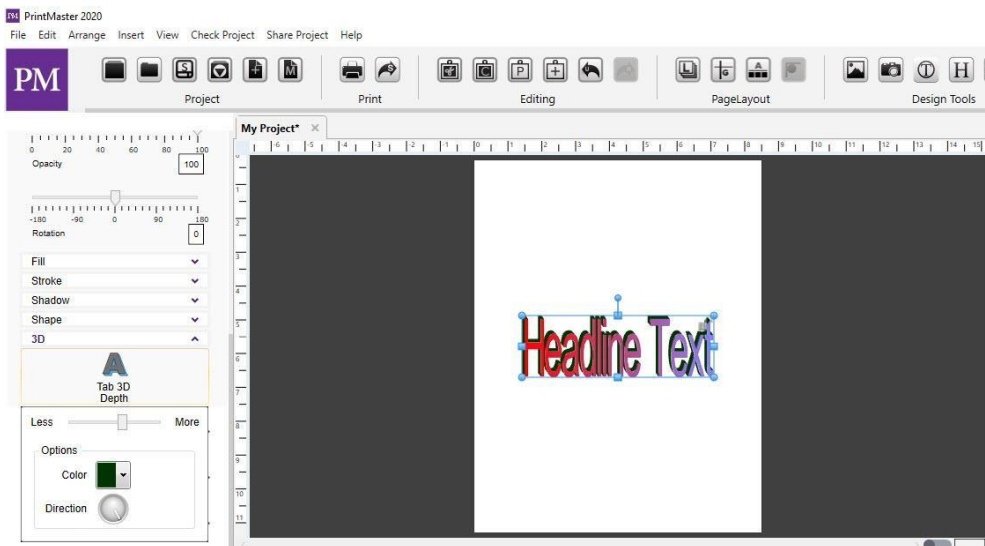


Fig 10.13.6: 3D Tab

## 10.14. Calendar

The calendar allows you to see and change month or year on the calendar page.

Icon Descriptions:

- a) Month – Add a calendar month to your page. Year – Add a calendar year to your page.
- b) Edit – Adjust the header, line, and date appearance of the selected calendar. Remove – Delete the selected calendar from the page.
- c) Month – Set a desired month for the selected calendar. Year – Set a desired year for the selected calendar.
- d) Header – Toggle the header box to show or hide the month or year header. Lines – Toggle the lines box to show or hide the separating grid lines.
- e) Numbers – Toggle the numbers box to show or hide the numbered dates.
- f) Apply settings to All Calendars – Applies the current calendar appearance to all calendars.

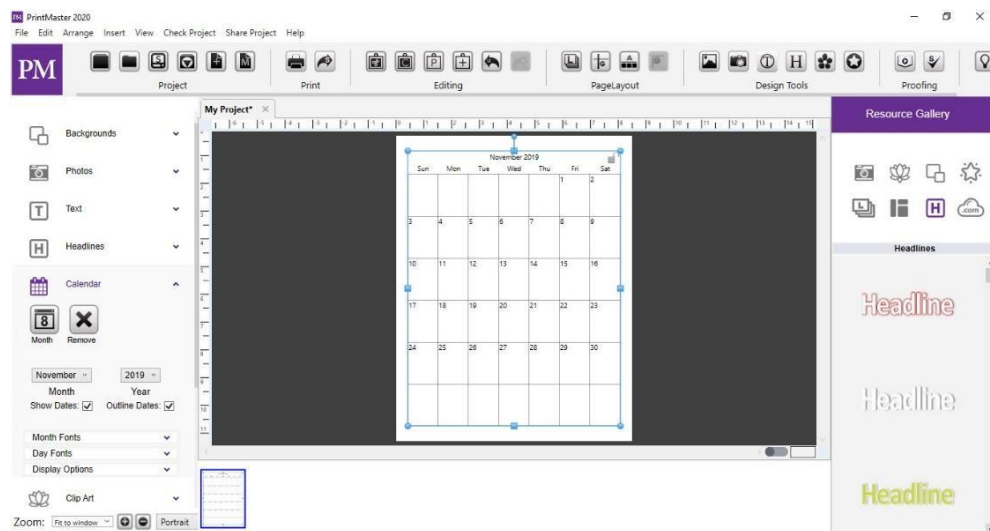


Fig 10.14: Calendar

### 10.14.1. Add Calendar to A Page:

1. Open the Calendar tab and click on the Month icon.
2. The calendar grid will appear in the middle of the page.
3. Drag from the center of the calendar to adjust the position.
4. Drag from the handles to adjust the size.
5. To enter an exact size right-click on the calendar and choose Edit Object.

### 10.14.2. Calendar Settings:

You can set your calendar by selecting the left side tabs

1. Toggle the Dates checkbox to hide or show the dates on the selected calendar.
2. Toggle the outline dates checkbox to hide or show the outline dates on the selected calendar. Change the month by using a dropdown menu.
3. Change the year by using a dropdown menu.
4. Font – Set font for the header or weekday names.
5. Size – Set the font size for the header or weekday names.
6. You can change the color of month and year by selecting Month fonts from the left tab. You can change the day number in the selected calendar by choosing day fonts.
7. You can change the outline dates by choosing the Display option. You can also change the alignment of dates in the calendar from this option

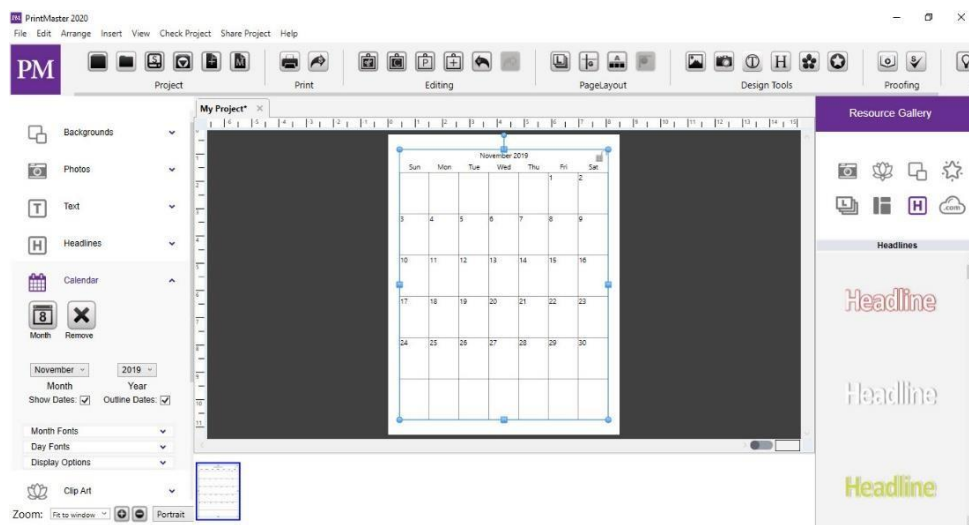


Fig 10.14.2.: Calendar Setting

### 10.14.3. Line Settings:

Change the outline color by choosing display options

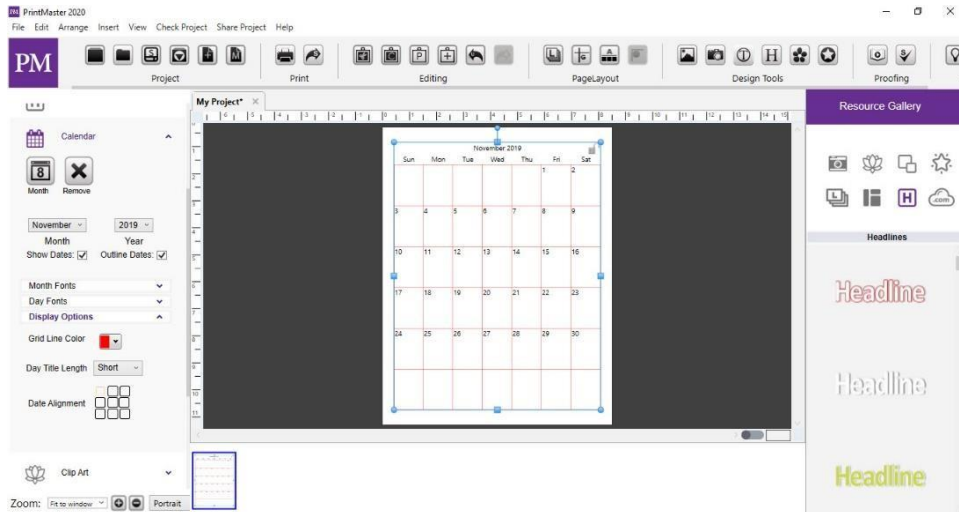


Fig 10.14.3: Line Setting

#### 10.14.4. Numbers Settings:

1. Font – Set a font style by using the dropdown.
2. Size – Set a size for the numbers by using the + or, click on the drop-down button to change the text color.

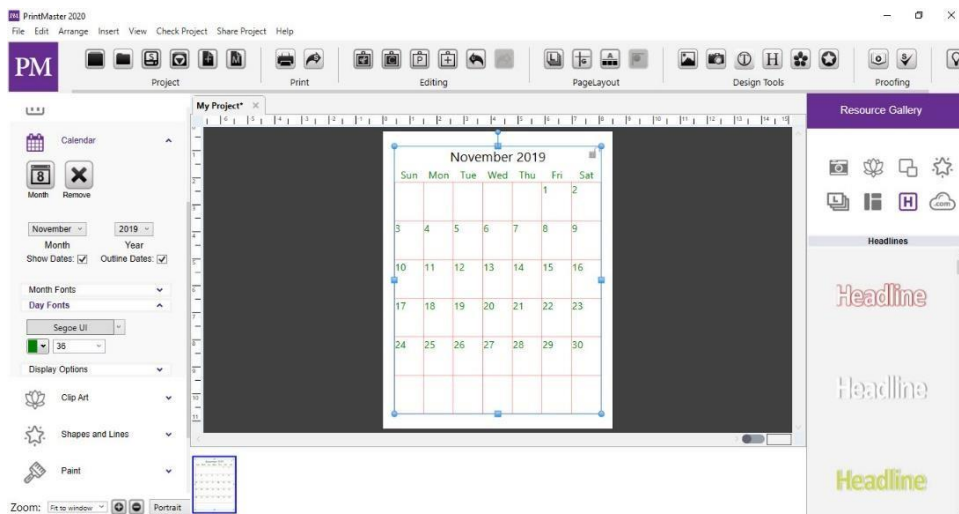


Fig 10.14.4: Number Setting

### 10.15. Clip Art

The clip art is a collection of graphic objects that are used for decoration on a page.

#### 10.15.1. Icon Descriptions:

1. Add – Add a selected Clip Art to your page.

2. Recolor – Recolor the selected Clip Art.
3. Crop – Crop unwanted portions of a Clip Art image.
4. Shadow – Add a shadow to the selected photo.
5. Mirror – Flip the image horizontally on the page.
6. Flip – Flip the image vertically on the page.
7. Left – Rotate the image left 90 degrees.
8. Right – Rotate the image right 90 degrees.
9. Remove – Deletes the image from the page.
10. Edit – Displays Clip Art info and allows you to adjust the image size and position.
11. Reset – Sets the Clip Art back to the default state.
12. Custom – Select an image file from your computer to use as Clip Art.
13. Opacity – Drag the slider left or right to increase or reduce the image transparency. Rotation – Drag the slider left or right to apply a rotation.

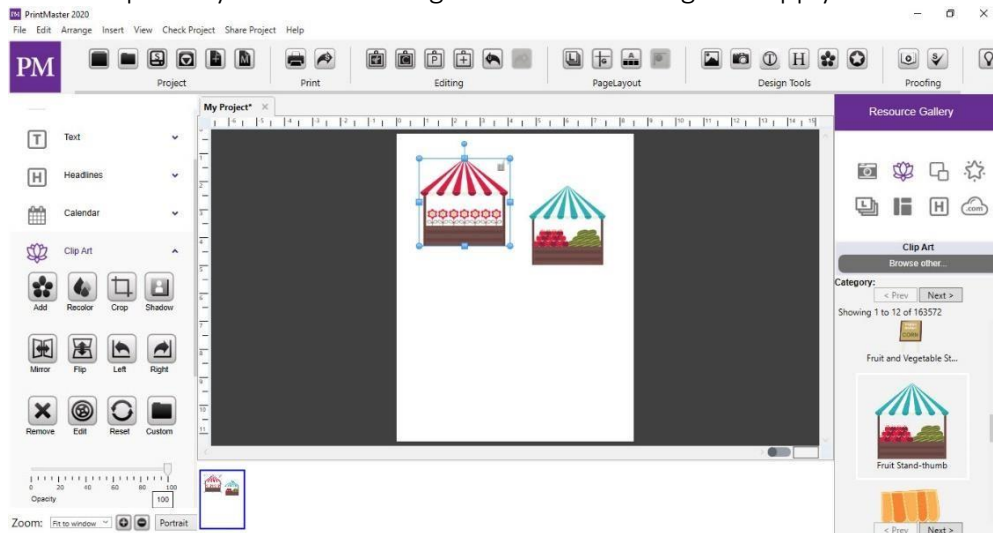


Fig 10.15.1: Clip Art

### 10.15.2. Adding Clip Art

1. Open the Clip Art tab and click on the Add icon.
2. Select a category name in the left column (click on the plus expand categories).
3. Select an item in the preview area, and click Apply to add it to the page.
4. Close the window when you are done adding images.
5. Drag the preview slider to increase or reduce the size of the previews.
6. Click on the up or down arrows next to Quantity to add more of the selected image.
7. Click on the Add to Favorites button to save the selected clip art to Favorites.
8. The Search field allows you to find clip art by keyword or name.



9. Toggle Search selected category only box to limit the search to the current category.
10. Select Browse other to add one of your own clip art images.
11. To view Royalty-Free content click the only show Royalty-Free content box.
12. Also, there is a search option to search the desired clip arts

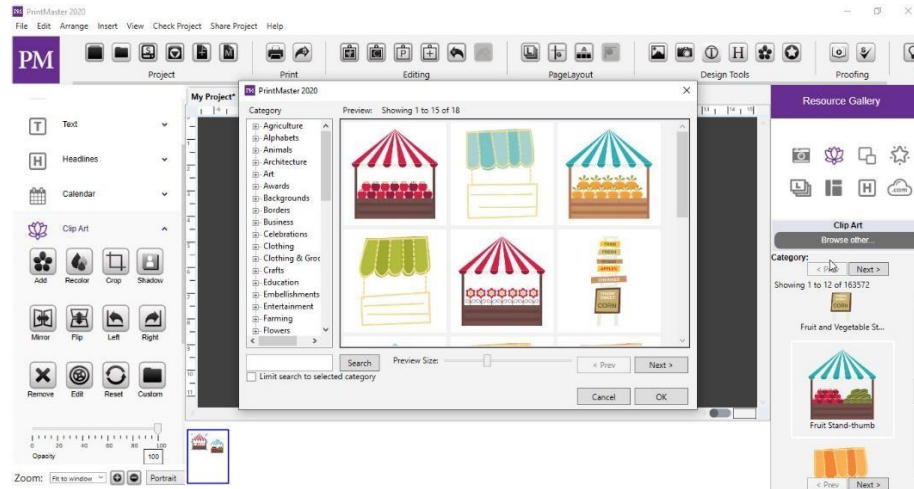


Fig 10.15.2: Adding Clip Art

### 10.15.3. Cropping Clip Art Images

1. Select a clip art image.
2. Click on the Crop icon.
3. Adjust the window to select the area you want to crop and then click Ok.

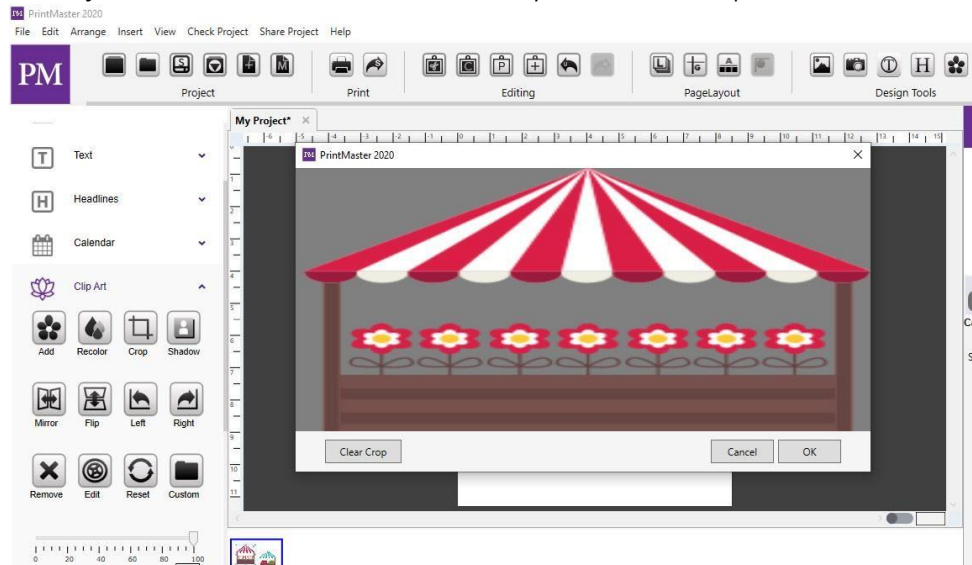


Fig 10.15.3: Cropping Clip Art Images

## 10.16. Shapes and Lines

Shapes and lines can be used as design elements in a number of ways. Shapes behind text can make the text stand out, or various shapes can make the page more fun.

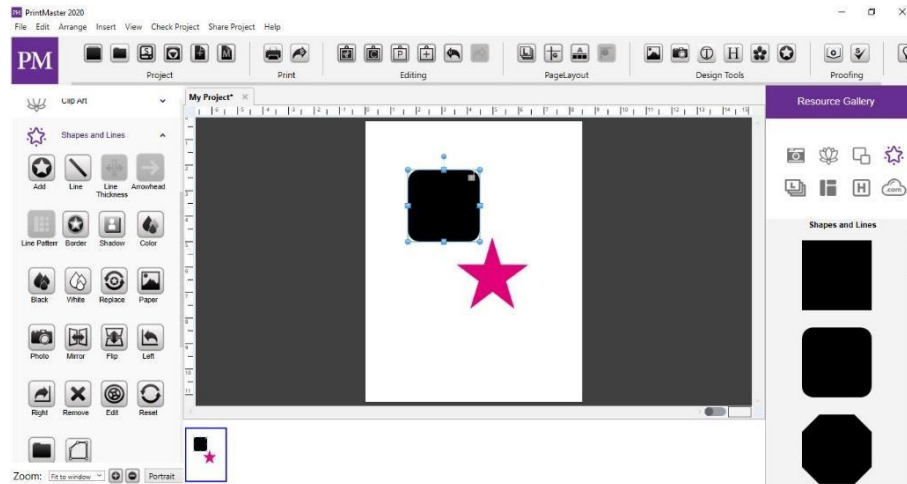


Fig 10.16- Shapes and Lines

### 10.16.1. Icon Descriptions:

1. Add – Add a selected shape to your page.
2. Line – Add a selected line to your page.
3. **Line Thickness** – Change thickness of your selected line.
4. **Arrowhead** – Include arrowheads to your selected line.
5. **Line Pattern** – Change the line pattern of your selected line.
6. Border – Add a border around the selected shape.
7. Shadow – Add a shadow to the selected shape.
8. Color – Set a color in the selected shape.
9. Black – Set the shape color to black.
10. White – Set the shape color to white.
11. Replace – Swap the selected shape with a different shape.
12. Paper – Fill the shape with a selected paper from the background categories.
13. Photo – Fill the shape with a selected photo from your computer.
14. Mirror – Flip the shape horizontally on the page.
15. Flip – Flip the shape vertically on the page.
16. Left – Rotate the shape left 90 degrees.
17. Right – Rotate the shape right 90 degrees.
18. Remove – Deletes the shape from the page.
19. Edit – Displays shape info and allows you to adjust the size and position.



20. Reset – Set the shape back to defaults.
21. Custom – Select your own custom .svg shapefile from your computer.
22. Opacity – Drag the slider left or right to increase or reduce the shape transparency.
23. Rotation – Drag the slider left or right to apply a rotation.

### 10.16.2. Adding Shapes

1. Open the Shapes and Lines tab and click on the Add icon.
2. Select your desired shape from the Category options and click Apply.
3. Click Close when done adding shapes.

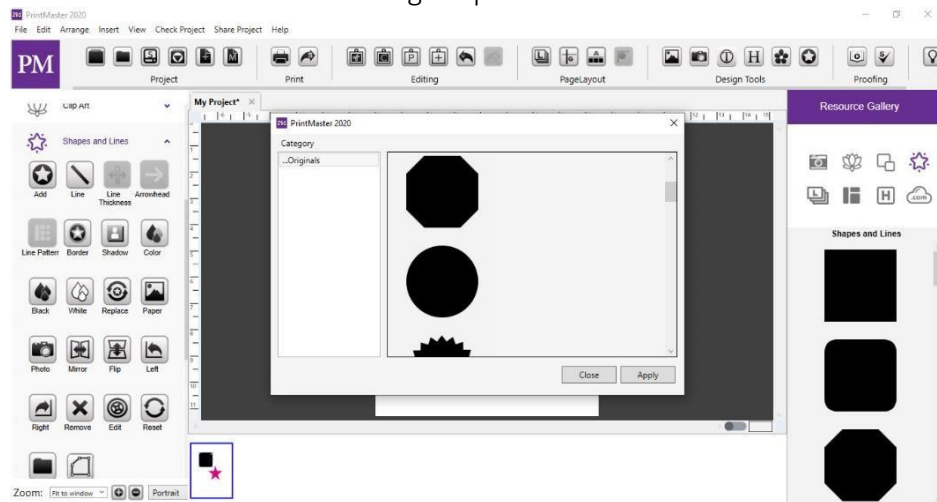


Fig 10.16.2: Adding Shapes

### 10.16.3. Replace Shape

1. Select a shape on your page with a left-click.
2. Under the Shapes and Lines tab click on the Replace icon. Select a new shape and click Apply.

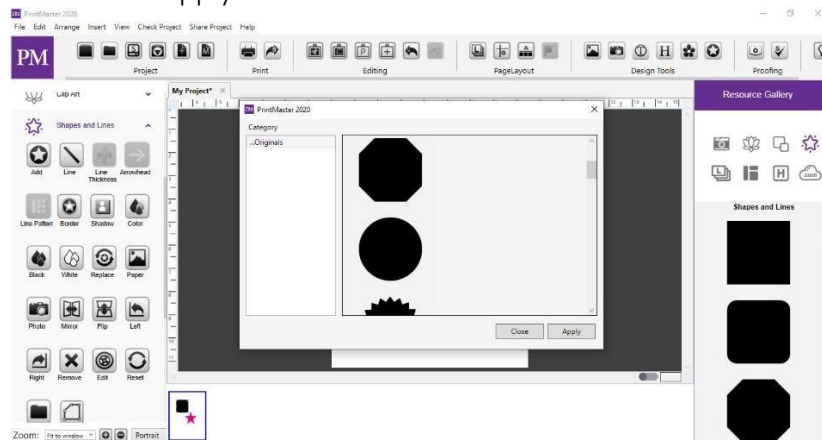


Fig 10.16.3: Replace Shape

**10.16.4. Fill the Shape with the Background Paper:**

1. Select a shape on your page.
2. Click on the Paper icon.
3. Select a background paper and click ok.

**10.16.5. Fill the Shape with a Photo:**

1. Select a shape on your page.
2. Click on the Photo icon.
3. Select an image from your computer and click ok.

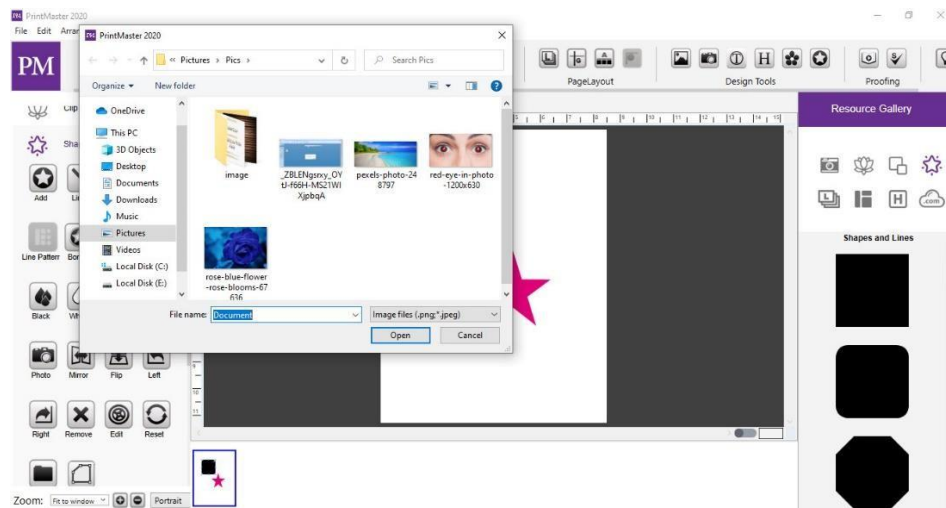


Fig 10.16.5: Fill the Shape with a Photo

**10.17. Draw Line.**

1. Select Shapes and Lines
2. Click on Line
3. After selecting the line, then line thickness option will enable now you can adjust line thickness according to your desire

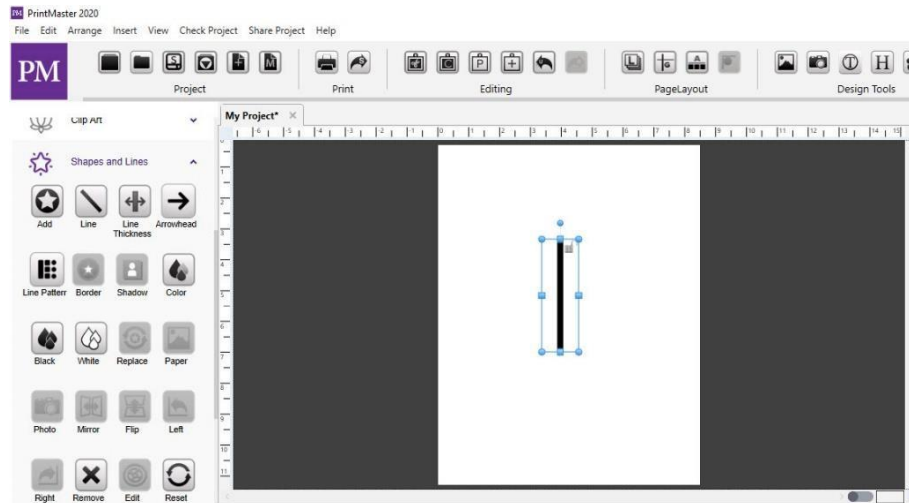


Fig 10.17: Draw Line

## 10.18. Paint

Fill space behind clip art images with a solid color, paint over parts of a photo so that it blends into your background, or draw on the page.

Icon Descriptions:

1. Add – Add a paint layer to your page.
2. Brush – Drag your cursor within the paint layer to add color.
3. Erase – Drag your cursor within the paint layer to remove added color.
4. Style – Set the brush style from available shapes.
5. Color – Set the color of the brush.
6. Match – Use the color picker to set the brush color from an existing color in the project.
7. Black – Set the color of the brush to black.
8. White – Set the color of the brush to white.
9. Mirror – Flip the paint layer horizontally.
10. Flip – Flip the paint layer vertically.
11. Left – Rotate the paint layer 90 degrees left.
12. Right – Rotate the paint layer 90 degrees right.
13. Remove – Delete the selected paint layer.
14. Edit – Toggle in and out of the paint mode.
15. Reset – Reset the paint layer to the originally added state.

16. Brush Size – Drag left to make the brush or eraser smaller, drag right to make it larger.
17. Opacity – Drag the slider left or right to increase or reduce the paint transparency.
18. Rotation – Drag the slider left or right to apply a rotation.

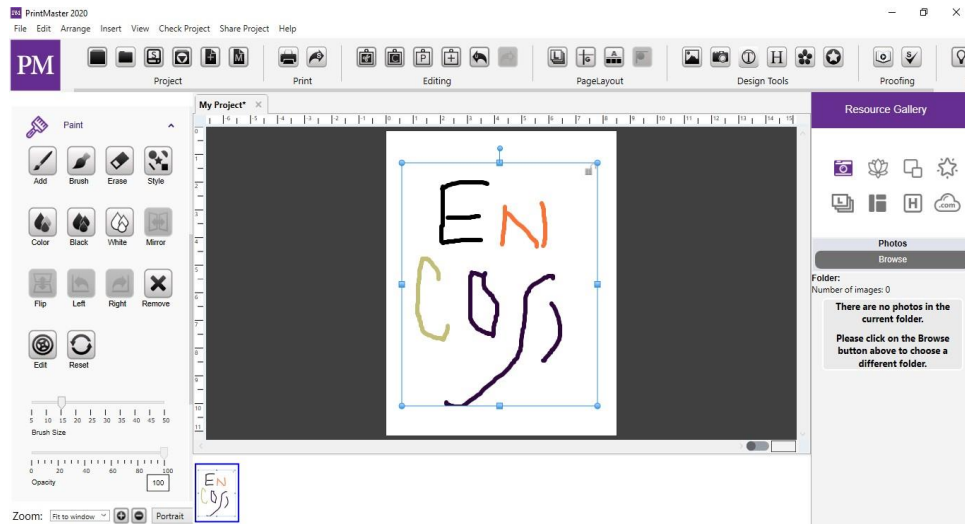


Fig 10.18: Paint

## 10.19. Project

View a list of what was used in your project, preview the project, check it for errors, and add, save, or remove page guides.

Icon Descriptions:

- a) Preview – View your project as a calendar, card, or as a print-quality page.
- b) Spelling – Check all text spelling in the project and displays a list of errors if it finds any.
- c) Insert – Add page guides at specific ruler positions on your page.
- d) Remove – Clear all page guides from the current project.
- e) Save – Save the currently set page guides to a template that can be added later.
- f) Template – Add previously saved page guides to the current project.

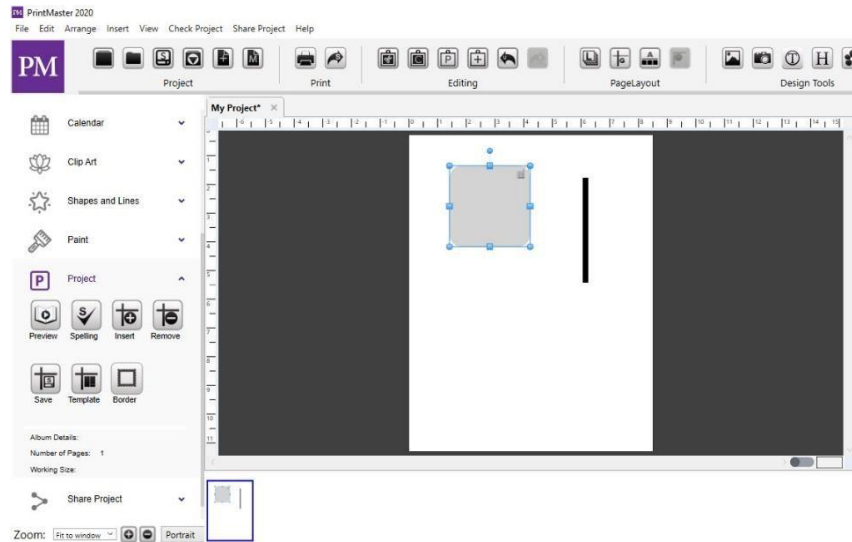


Fig 10.19: Project

### 10.19.1. Project Preview:

1. Preview – Preview the project as a book, calendar, card or print quality.
2. Open the Project panel and click on the Preview icon.
3. Select the desired preview type based on your project and click OK.

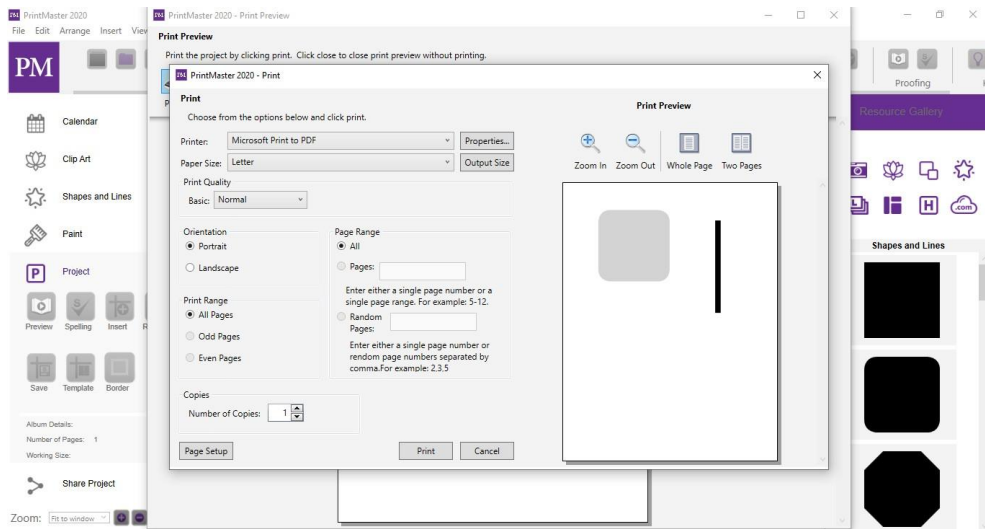


Fig 10.19.1: Project Preview

### 10.20. Spell Checker

1. Check Spelling - Check the project for spelling.
2. Go to the Check Project Menu > Check Spelling.
3. You may check a specific page or the entire album, then click OK.

4. If the spell checker finds misspelled words, it will launch the Check Spelling dialog.
  - a) Ignore – Leaves the current word as it is and moves on to the next misspelling.
  - b) Ignore All – Leaves the current word and any identical words in the entire project as they are.
  - c) Change – Replaces this instance of the word in the Not in dictionary field with the one in the Change to the field.
  - d) Change All – Replaces this and all subsequent instances of the word in the Not in dictionary field with the one in the Change to the field.
  - e) Suggest – If the spell checker doesn't automatically provide alternate words in the Suggestions field, click on this button.
  - f) Add – Places the current word into the dictionary and continues with the spell check process.
  - g) Undo – When making multiple changes within the same text box, this allows you to return the last word you changed to its former spelling.
  - h) Cancel – Exits the spell checker.
5. If you have questions, go to the support Web page at <https://encoresupport.freshdesk.com/support/home>

## 10.21. Project Output Preparation

1. PrintMaster 2020 provides flexibility when outputting your project: printing, export as JPG, PNG, PDF, uploading to be printed as a photo album, and more.
2. Careful planning is necessary to take full advantage of this flexibility. Please take note of the following considerations when designing a project:
3. Print – Pay close attention to the paper size of the project type you select when creating a project. Many projects use a paper size other than the standard 8.5" x 11" paper.
4. Photo Album: The photo album creation process may trim up to 1/2" per page side.



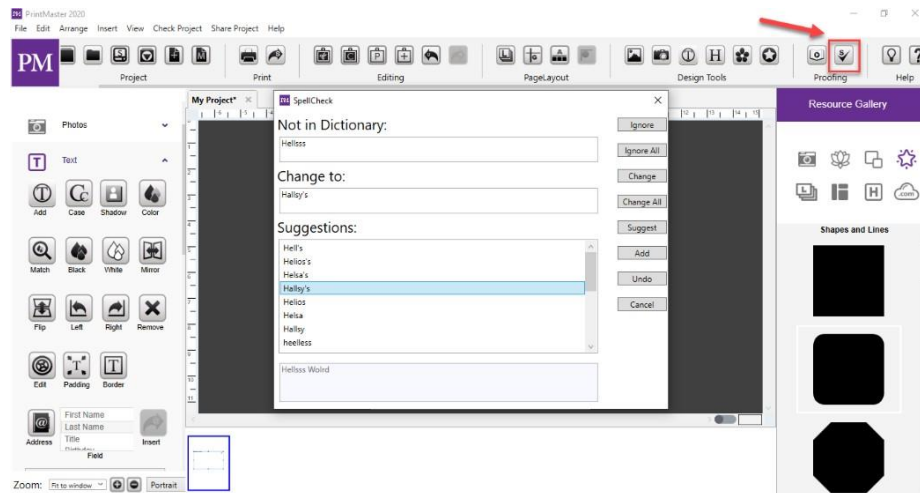


Fig 10.21: Project Output Preparation

## 11. Customer Support

If questions arise while using or installing the software, don't hesitate to go to the Encore website for assistance.

1. Technical Support Website:  
<https://encoresupport.freshdesk.com/support/solutions/folders/43000563712>
2. How: To Video Tutorials:  
[https://www.youtube.com/channel/UCatgw37O3mupzZDSNVxS\\_yA/videos](https://www.youtube.com/channel/UCatgw37O3mupzZDSNVxS_yA/videos)
3. Forums Support for How-To Questions: <http://forums.encoreusa.com/tt.asp?forumid=356>

## 12. SHARING YOUR PROJECT

Share your project with family and friends as a calendar, card, or digital image file. Icon Descriptions. Fig 12

1. Export: Save your project as JPG or PDF images for viewing or sharing.
2. Print: Print your project on a home printer.

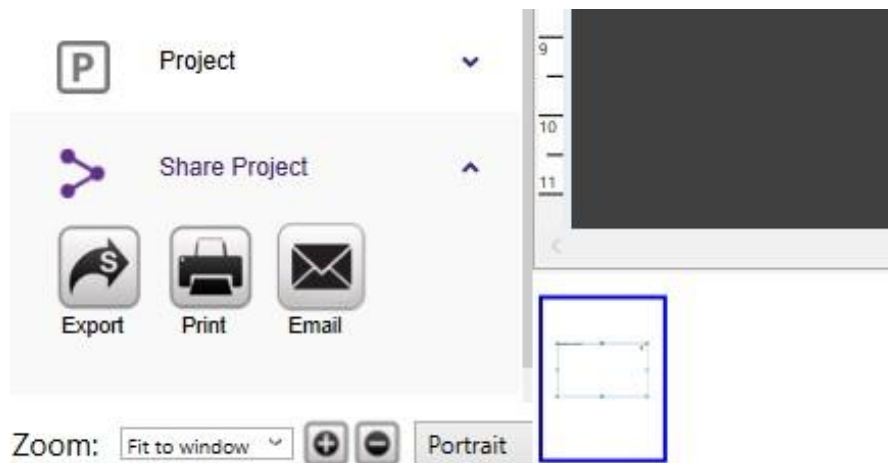


Fig 12: Sharing Your Project

Before printing business cards, you may want to create an Avery sheet.

### 12.1.1. Print

Print your project pages on a home printer: Fig 13.1

1. Options: Select printer, copies, paper size, orientation, scaling, and image size.
2. Printer: Select a printer from the drop-down of available printers.
3. Copies: Enter a number for the number of copies you wish to print.
4. Pages: Include all or selected pages to print.
5. Paper Size: Select a paper size and type you wish to print on from the drop-down.
6. Orientation: Select a landscape or portrait option.
7. Scale: Scale the image down to fit or print at the actual size that may crop slightly.
8. Image Size: Print the image at a preset number or custom size that will fit on the page.

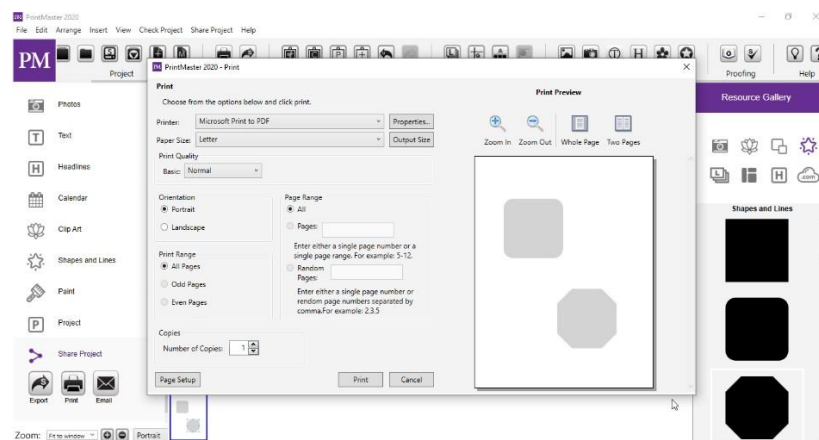


Fig 12.1.1: Print

### 12.1.2. Export

Save your project as JPG, PNG, or PDF images for viewing and sharing. Fig 13.2

1. Go to the Share menu > Export.
2. Select the Image Type, Pages, Size, and Compression then click Finish.
3. Select the desired Export location (Example: Desktop) and click Save.
4. A folder will be generated in the set export location with the image files inside.

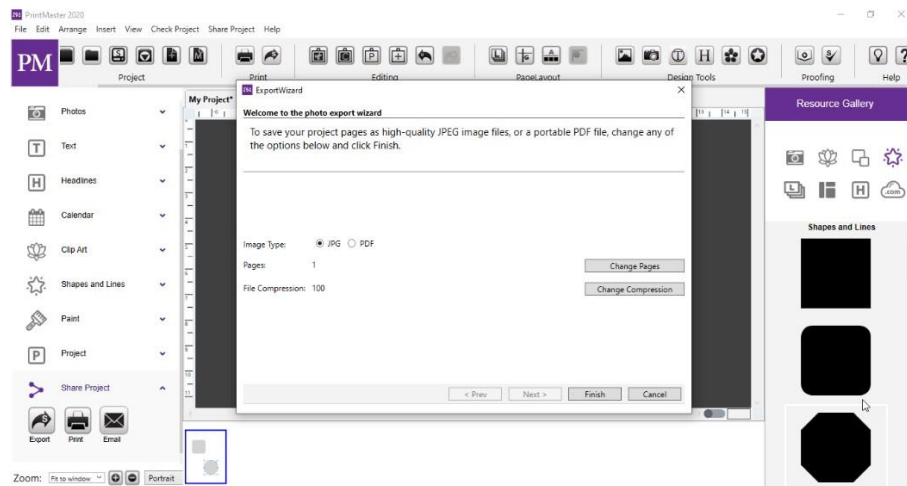


Fig 12.1.2: Export

### 12.1.3. Image Type

Select the type of image format you wish to create.

1. JPG: Is a common image format compatible with all systems.
2. PDF: Allows you to save all pages into a single document for easier viewing. Pages – Select which pages are included with export.
3. Pages with the checkbox in the upper left are selected for export. The Select All button will mark all pages for export.
4. The Clear All button will clear all pages from export.

### 12.1.4. Image Size:

Select a size for your exported files.

1. Larger sizes will give a better quality of printing.
2. Smaller sizes use less space and are easier to share or send in emails.

### 12.1.5. File Compression:

Select the quality of the exported files.

1. 100% creates a better-quality image for printing.
2. Lower % creates a smaller file size but reduces image quality. (Note: PNG files are not affected by compression settings)

# PrintMaster® 2022

---

## User Guide